



The Chester Cycle  
of Mystery Plays

EMP 16/10/1



# The Chester Cycle of Mystery Plays

*(a new translation by Edward Burns)*

THE CATHEDRAL GREEN CHESTER

*(by kind permission of the Dean and Chapter)*

Tuesday, 30th June, to Sunday, 12th July, 1987

MUSICAL COMPOSITION BY JONATHAN HOLLOWAY

DESIGNS BY TONY LEWERY      LIGHTING DESIGN BY PAT NELDER

ARTISTIC DIRECTION BY BOB CHEESEMAN

Sponsored by

NORTH WEST SECURITIES LIMITED

and

SWETENHAMS



## FROM THE ARTISTIC DIRECTOR

We welcome you to the 1987 Cycle of Chester Mystery Plays and hope that you find the experience both entertaining and meaningful. As Artistic Director of the venture, it has, from the first, been my aim to encourage and co-ordinate the various creative skills and energies of people of Chester and its neighbouring parts. And I am excited about the outcome: a rich tapestry of artistic endeavour created by amateurs and professionals, experienced and inexperienced. What we present here is no fossilised medieval product: I believe that we have created a living testament to those medieval craftsmen who sought to make these Biblical stories engaging, relevant and inspiring to themselves and to others through any means possible.

Each section of the Cycle is a play in its own right, originally performed by a separate company. We have resurrected that tradition and pushed the idea further: all our companies, working under their own directors, have been encouraged to produce their pieces with almost absolute artistic and stylistic freedom.

Only four conditions have been agreed:—

- (a) each play would be performed on the Cathedral Green, using any part of our set structure (except God's highest level);
- (b) two characters—God the Father and our master-of-ceremonies/commentator, Gobbet-on-the-Green—would be constant figures throughout the Cycle and have certain fixed parts to play;
- (c) each company would aim to keep to the specially-commissioned adaptation of the texts composed by Edward Burns;
- (d) each company would attempt to present its play in accordance with what is perceived to be its original intent.

All other matters have been subject to continual exchange of ideas between the various companies, Tony Lewery and myself.

Our 1987 Cycle is thus a festival of Biblical plays, produced separately by independent companies, woven together by various devices, so that a continuous story is told. Do try to attend the full three-part saga.

*Bob Cheeseman*

## A NOTE ON THE TRANSLATION

"Translating" the Chester plays is not like "translating" a piece of Latin, or a Spanish restaurant menu. For a start, the language in which they are written has a continuous history with the language we speak today. Secondly, there is not really a fixed "original", a single authentic medieval text.

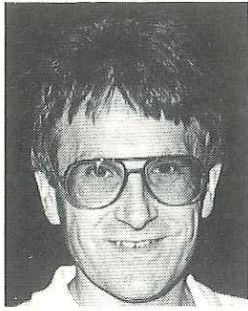
The guilds who put on the plays talk about an "original", but they mean an official copy, from which they wrote down the play assigned to them. The strict eye kept on this "original" was not to make sure that it stayed the same, but rather the opposite—that it was always open to censorship and revision along current religious and political lines. The unity of style of the plays points not so much to an "original" author, as to one man or a group, commissioned to overhaul a varied collection of plays, all dating from different periods, some indigenous, some based on plays from elsewhere. A mass of heterogeneous material has been formed at some point—probably in the 1530s—into an epic drama of the history of the world from Creation to Doomsday.

So no translator can speak of getting close to the "original" Cycle Plays. Even the 1530s "original" disappeared, and we are reliant on texts copied for 17th Century antiquaries—possibly, though not conclusively, from an official text. Any version of a line is chosen by comparing these existing texts against one another. It may not even make much sense to talk of a "translation". In a way, I could think of myself as the latest of the Chester scribes, working with an idea of fidelity to a long-standing tradition, with the aim of preserving it (and with patrons who, like the Tudor Council, have an eye on civic profit as much as on public instruction), but also fitting it to the requirements of my own audience. So the plays may be cut down and reshaped, but the overall proportions must be those of the texts from which I work. The language must be updated, but only to make traditional ideas more comprehensible.

The language of my version is contemporary, without being identifiably "modern". Many colloquial expressions remain the same, and the simpler archaisms are still familiar to us from hymns and carols. The range of language may surprise those who expect modern (or Victorian) piety, but it is true to the manuscript texts, and reflects the directness of the players presenting not what they wished to appear holy, but what they believed to be true.

*Edward Burns*

**The full text has been published by Liverpool University Press  
and will be on sale during the presentation of the Plays.**



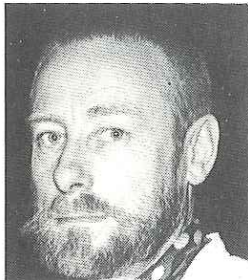
Photograph by D. L. Price

**THE ARTISTIC DIRECTOR: Bob Cheeseman**

After training at the Central School of Speech and Drama, Bob Cheeseman worked briefly in B.B.C. Television as an Assistant Director, and did some filming as an actor, before going on to teach at the Royal Academy of Dramatic Art and, eventually, back to Central School as a tutor. Since then, the bulk of his working life has been taken up with the training and education of students (both professional and amateur), but he is delighted that he has been able to work professionally as a director on a number of occasions alongside his teaching commitments. While he was Course Director of the Manchester Polytechnic School of Theatre, he directed many productions in various Manchester theatres and also spent some years working for H. M. Tennent as Director of the national tours and West End productions of the musical *Godspell*. In 1985, he was appointed as Head of Drama at Chester College of Higher Education.

**THE TRANSLATOR: Edward Burns**

Edward Burns was born in Liverpool, where he is now a Lecturer in English at the University. He has recently published a book on Restoration Comedy, and has just completed another on character in pre-modern drama. Productions at Liverpool, as Director and Designer, include three sections of the Chester Cycle, Gluck's opera *Iphigenie en Tauride*, Stravinsky's *The Soldier's Tale*, Brecht's *Man Equals Man* and Shakespeare's *Measure For Measure*.



Photograph by D. L. Price

**THE DESIGNER: Tony Lewery**

Tony Lewery is originally from Brighton, in Sussex, where he trained as a painter, although he has now lived in the North West for over 20 years. He is especially interested in folk and popular art and is an author and occasional lecturer in this subject. His interest in theatre was initially kindled by his actress wife, Mary, who is also performing in the Mystery Plays, but the bulk of his theatre work in the last ten years has been concentrated on large-scale and outdoor events, carnivals, street theatre and bonfires, working quite often with Welfare State International, from Cumbria. He has designed the set for this show and some of the main costumes and effects, but the majority of his work was in trying to help the individual groups realise their own visions of these plays, blending lots of contrasting ideas into what he hopes you will find an interesting collage of styles.

**ACTOR: Colin McFarlane—God**

Colin McFarlane graduated from Loughborough University in 1983, with a B.A. Hons. Degree in Drama, turning professional in 1984. His television work includes the part of *Mkwela*; a public schoolboy in the film *Dutch Girls*; Detective-Sergeant Watson in several episodes of *Dempsey And Makepeace*; and a teacher in *To Have And To Hold*—all for London Weekend Television. His theatre work includes the part of *Othello*, here at Chester's Gateway Theatre, as well as Shere Khan in *Jungle Book*. He has also appeared as Horatio in *Hamlet*, and Claudio in *Measure For Measure*, both for the Tower Shakespeare Company; Duff in Pinter's *Landscapes*, for the Guildford Theatre Company; the title role in *Scott Joplin's Ragtime*, at the Canal Cafe Theatre; Bernard in *Boys In The Band* and Aide Turkel in *One Flew Over The Cuckoo's Nest*, at Swansea Grand Theatre; and Baldock in *Edward II*, at the Royal Exchange Theatre, Manchester. He comes to us from the Derby Playhouse, where he played Colin in *Our Day Out*, and Demetrius in *A Midsummer Night's Dream*. Colin is happy to be back in Chester, playing the part of "God" in this Cycle of plays.



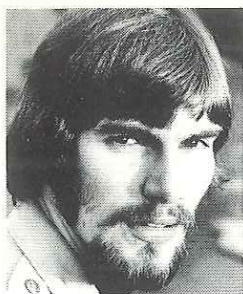
Photograph by Alpha Management Ltd.



Photograph by K. N. Hewitt

**ACTOR: Alexander David—Gobbet-on-the-Green**

Alexander David trained for the stage at Bristol Old Vic Theatre School, after gaining a degree at London University. He spent seven years at Salisbury Playhouse as an actor and T.I.E. (Theatre In Education). He founded and directed a children's theatre company based in Salisbury, where he started to develop his interest in magic and circus skills. After working in the South for several years, he toured Europe with a travelling circus, before settling in Scotland and taking a training course at Craigie College in Ayr. David has since taught in primary and secondary schools and is currently in the Speech and Drama Department at Howell's School, Denbigh, and was voted "Talented Teacher of the Year" on ITV's *The Saturday Show*.



Photograph by Mark Gudgeon

**ACTOR: Alan Gaunt**

Alan Gaunt trained at R.A.D.A. His theatre work includes spells at Manchester's Contact Theatre and Oldham Repertory. He has appeared in several TV productions and is currently Programme Co-ordinator of Viper Television, the cable TV station at the Countess of Chester Hospital.

**COMPOSER: Jonathan Holloway**

Jonathan Holloway was born in South Cheshire in 1959. After attending Warrington College of Art and Design, he studied Creative Arts at Crewe and Alsager College, graduating with a First Class Honours Degree in 1982. As well as writing music, he has had several exhibitions of visual art, and has directed and acted with community drama. Music for *Creation And Fall* is John's third major commission in the past year. An eponymously titled album of music composed for dance is also available.

**MUSIC: The Chester Waytes**

*Anne Cross, Bob Cross, Peter Davey, Andrew Godfrey, David Griffith, Alan Hamilton, John Kelly*

The Chester Waytes were formed in 1986, aiming to recapture the spirit of a renaissance town band, and modelling themselves after the City's original "Waytes" of the 16th Century. "Waytes" were professional musicians employed by a town to add pomp and splendour to civic occasions. In providing much of the live music for the Chester Mystery Plays production, the Chester Waytes perform on a variety of instruments, including reproductions of early instruments and even more exotic instruments from around the world. They are led by David Griffith, who is also the Musical Co-ordinator for the production.

**PRODUCTION MANAGER: Jonathan Hartley**

Early aspirations to being an actor quickly gave way to the lure of "life behind the scenes". At present, Jon is Production Manager for Contact Theatre in Manchester. The Chester Mystery Plays present yet one more challenge to a richly varied career, and he is looking forward to working closely with all those who have given of their time to ensure the success of this event.

**SOUND: Dave Manley**

Dave Manley lives and works in Chester, and has been connected with the theatrical side of professional theatre for a number of years. He has been operating sound equipment since he was 14, and has done a number of national tours. At present, he divides his time between working on the "Chester Packet" horse-drawn narrow-boat and running a P.A. hire firm, "Cactus Sound".

**LIGHTING DESIGN: Pat Nelder**

Born in 1950, Pat became involved with beautiful young actresses and his local dramatic society (in that order!). His student career was totally disrupted by several tours to America and Edinburgh, with undergraduate productions. He emerged as a professional theatre technician. He then worked in theatres at Oxford, Bury St. Edmunds, Ilford and Darlington, before moving to Theatr Clwyd. Recent work includes the West End productions of *Antony and Cleopatra*, with Vanessa Redgrave, and *An Inspector Calls*, with Tom Baker. He also acts as a theatre consultant, and lectures on stage lighting. His current hobby is Open University.

**Other performers taking part**

Denise Hart ... .. Singer

Claire Cheeseman ... .. Violin

Howell's School ... .. Interlude Players

Deborah Birchall, Annabel Talbot, Georgina Worsley-Winteringham, Gwenno Williams, Julie Jones

**CHRYSALIS PERFORMANCE ARTS**

will perform street theatre, both in the streets of Chester and in the evening plays. Witness *The Bird Of Heaven*, *The Earth Bird of Dreams* and *The Satanic Cart of Chaos* as the mystery unfolds.

**STREET THEATRE COMPANY**

Angela Boast, John Filder, Carol German, Halaina Gillam, Timothy Lyons, Jane Michel, Helen Prosser, Joanne Shiel, Christine Tait, Michelle Thompson, David Watkins, Susan Williams, Colette Hannon, Mary Lewery. Directed by Rick Faulkner and Kate Maddison of *Chrysalis*.

# Part One — "The Coming"

## THE PROLOGUE

*Gobbet-on-the-Green* ..... Alexander David  
*God* ..... Colin McFarlane

## THE CREATION AND FALL

Originally performed by the Barkers, Tanners, Drapers and Hosiers and now by the Cheshire Drama Workshop

*"I made you my friend, and you are my foe. Why have you trespassed this way against me?"*

*Lucifer* ..... Merville Jones  
(30 June, 5 and 11 July)  
Steve Hooper  
(3 and 8 July)

*Lightborn* ..... Suzanne Whitworth

*Adam* ..... Steve Parry

*Eve* ..... Helena Rudd

*Angels:* Jen Hopkins, Jacqui Rowing, with  
Lucy Adams, Joanne Bate, Sarah Blease,  
Alison Davies, Karen Ferguson, Amy  
Frith, Sharon Gray, Emma Hulme,  
Joanne Kosh, Kerry McKay, Paula  
Pearce, Kerry Powell, Lindsey Sheen,

Catherine Sims, Tracey Wall, Lance  
Bray, Paul Craig, Euan Forbes, Paul  
Hatherley, Andrew Henderson, Jason  
Kosh, Benjamin McDonald, Mathew  
Paice, Rory Smith

*Directed by:* Veronica Lewis, Beverley  
Stevens and Jo Buffery

*Music* ..... John Holloway

*Design* ..... Beryl Brown

*Technical Direction* ..... Rosie Weston

*Administration* ..... Steve Thorp

## CAIN AND ABEL

Originally performed by the Tanners and now by the Davenham Players

*"Cain, where is your brother Abel?"*

*Adam* ..... Trevor Snelson      *Cain* ..... Jonti Bateman  
*Eve* ..... Joan Carter      *Abel* ..... Tony Spilsbury  
*Director* ..... Anne Mackey

## NOAH'S FLOOD

Originally performed by the Waterleaders and Drawers in the Dee and now by the Wirral Youth Theatre

*"I see that my people in deed and thought are foully besotted in sin"*

*Noah* ..... Allen Bryson      *Choreography* ..... Collette Sarson

*Noah's Wife* ..... Marnie Clark      *"Flood" Music composed and played by Rob  
Smith*

*Cham* ..... Geoff Lowe

*Cham's Wife* ..... Sandra Whyte

*Shem* ..... Andy Lewis

*Shem's Wife* ..... Juliet Bowman

*Japhet* ..... Pete Turner

*Japhet's Wife* ..... Joan Hindley

*Dove* ..... Kellie Boggess

*Raven* ..... Pete Mooney

*Gossips:* Michele Butterly, Louise Thomas,  
Lorraine Fear, Rachel Stewart, Anji  
Owens, Louise Heywood, Judy Pugh,  
Helen Gibson, Liz Anderson, Morag  
McCrone, Elsie Bladen

*Floor Dancers:* Ray Davies, Billy Kilpatrick,  
Paul Marples, Richard Oliveri, Brian  
McHardy, Dawn Taylor, Tricia Yates,  
Emma Clark, Jane Stevens, Mary Green,  
Marie Kelly, Janet Lundstrum, Andrea  
Bonner

*Animals*—Children from the following  
schools:—  
30 June: Christleton County Primary  
3 July: Mansfield County Primary  
5 July: Upton Millview County Primary  
8 July: Huntington County Primary  
11 July: Mansfield Infants, Capenhurst  
County Primary

*Directed by* ..... Sarah Lovell

*Special thanks to:* Mary Austin, Pete Davis  
and Frank Bielicke (Max Headroom  
Recording Studios)

*Tarantula*, composed by John Holloway,  
is the opening section of *Sericulture*, a  
music piece originally commissioned for  
Crunch Dance Company in 1986. It is  
available on record

## ABRAHAM AND ISAAC

Originally performed by the Barber Surgeons and now by the Chester Gateway Studio Theatre Company

*"Abraham, my servant, I say to thee thy help and thy succour will I be"*

Abraham	..... Christopher Cope	Abraham's family includes:	Barbara Griffiths,
Isaac	..... Mark Simpson		Mary Griffiths, Kathryn Simpson, Tara
Director	..... Piers Norbury		Simpson, Helen Watson
Co-ordinator	..... Barbara Griffiths		

### — INTERVAL —

## THE BIRTH

### THE NATIVITY

Originally performed by the Wrights, Slaters, Tylers, Daubers and Thatchers and now by the Early English Theatre Group

*"Riches and power he forsakes, and to me he enters in"*

Mary	..... Helen Taylor (30 June, 5 July)	The Sybil	..... Sarah Lloyd
	Catherine Batt (3, 8 and 11 July)	Sybil's Attendant	..... Catherine Batt (30 June and 5 July)
Joseph	..... Ken Moss (30 June and 5 July)		Helen Taylor (3, 8 and 11 July)
	Robert Lewis (3, 8 and 11 July)	Midwives—Tybil	..... Julia Moffat
		—Salome	..... Ann Farrar
Gabriel I	..... James Allen	Director	..... Edward Burns
Gabriel II	..... Leigh Chambers	Assistant Director	..... Leigh Chambers
Roman Messengers	..... Liam O'Brien (except for 8 July)	Voice Work	..... Graeme Phillips
	Neil Sayer	Stage Management	..... Sarah Williamson
Emperor Octavian	..... Brian Nellist	Special Costumes	..... Glynis Davis

## THE SHEPHERDS

Originally performed by the Painters, Glaziers, Embroiderers and Stationers and now by the Cwmni Theatre Company

*"Shepherds, at this sight, have no fright"*

Hankyn (First Shepherd)	.. Derek Hollins	Mary	..... Dora Jones
Harvey (Second Shepherd)	.. Kevin Lewis	Joseph	..... Bill Woods
Tudd (Third Shepherd)	... Darren Clarke	Angels: Members of the Llwynegryn Singers, Mold	
Trowle (The Boy)	.... Andrew Snowden	Costume and Properties	.... Rita Hobgen
Four Boys: Bleddyn Griffith, Matthew Griffiths, Alun McLean, Sion Mihangel		Technical Manager	... David Greenhalgh
Angel	..... Michael Evans		

## KINGS AND INNOCENTS

Originally performed by the Goldsmiths and Masons and now by the Makeshift Mummings

*"Herod's fellowship you shall flee"*

King 1	..... Alan Hamilton	Joseph	..... Iain Berriman
King 2	..... Adrian Swain	Women: Nicky Berriman, Senga Berriman, Lyn Brown, Flo Clucas, Joanne French, Holly Gregory, Mandy Fisher, Kirsty Jones, Gaynor Laird, Liz Taylor	
King 3	..... Dave Groves	Soldiers	.... Keith Scott, Kenneth Sloane
Herod	..... Dave Tidbury	Director	..... Alan Hamilton
Bodyguards	Rob Berriman, Mark Fawcett		
Sir Waradrake	..... John Clucas		
Sir Grimball	..... Drew Rowlands		
Mary	..... Sarah Everitt		

## Part Two — "The Life"

### THE MINISTRY

#### THE TEMPTATION

Originally performed by the Butchers and now by the Ashton Hayes Theatre Club

*"No fault in him can I find"*

<i>Christ</i> .....	Ken Lunn	<i>Second Pharisee</i> .....	Paul Rigby-Jones
<i>Satan</i> .....	Simon Collins	<i>Disciples and Citizens:</i>	Members of Ashton Hayes Theatre Club
<i>Woman</i> .....	Mary Brocklehurst	<i>Director</i> .....	Stella Wilkinson
<i>First Pharisee</i> .....	Peter Dodds		

#### THE HEALINGS

Originally performed by the Glovers and now by the Chester Theatre Club

*"The man which we call Jesus, that works miracles daily with us"*

<i>Jesus</i> .....	John Huddart	<i>Mary</i> .....	Jane Barth Colette Hannon
<i>Blind Man</i> .....	Nick Kokkinis	<i>Peter</i> .....	John Tandy
<i>Neighbour 1</i> .....	Margery Alexander	<i>Thomas</i> .....	Peter Shaw
<i>Neighbour 2</i> .....	Kira Sander	<i>Jew 1</i> .....	John Spenser
<i>Neighbour 3</i> .....	Liz Evans	<i>Jew 2</i> .....	Tim Davenport
<i>Pharisee 1</i> .....	Roger Gladman	<i>Lazarus</i> .....	Colin Banks
<i>Pharisee 2</i> .....	Peter Whitby	<i>Martha</i> .....	Linda Somers
<i>Blind Man's Father</i> .....	Victor Cosgrove	<i>Director</i> .....	Sylvia Selzer
<i>Blind Man's Mother</i> .....	Kay Whittle	<i>Assistant Director</i> .....	Liz Stafford
<i>Messenger</i> .....	Elizabeth Toft Guy Jones	<i>Wardrobe</i> .....	Rita Fletcher

#### JUDAS'S PLOT

Originally performed by the Corvisars and now by the Chester Youth Theatre

*"If we let him long go on, all men will believe in him anon"*

<i>Simon the Leper</i> .....	Joe Stathers	<i>Citizens:</i>	Heather Robinson, Helen Fer- guson, Anna Addison, Vania Coppack, Matthew Panesh, John Trangman
<i>Lazarus</i> .....	Matthew Butt	<i>Traders:</i>	Anna Addison, Helen Ferguson, Heather Robinson
<i>Martha</i> .....	Vania Coppack	<i>Caiaphas</i> .....	Tim Reece
<i>Mary of Magdalen</i> .....	Judi Wilton	<i>Annas</i> .....	Robin Crowley
<i>Judas</i> .....	Guy Jones	<i>Pharisees</i> .....	Matthew Butt Darren Bentley
<i>Jesus</i> .....	Ray Coulthard	<i>Director</i> .....	Robin Goddard
<i>Peter</i> .....	Darren Bentley		
<i>Philip</i> .....	Robin Crowley		
<i>Janitor</i> .....	David Alexander		

— INTERVAL —

## THE BETRAYAL

### THE LAST SUPPER

Originally performed by the Bakers and Millers and now by the Chester Clergy

*"A new law now must I begin, to help mankind out of his sin"*

<i>Jesus</i> .....	Stephen Ridley	<i>Thomas</i> .....	David Smith
<i>Peter</i> .....	Cecil Clarke	<i>Philip</i> .....	Dennis Kelly
<i>John</i> .....	Gareth West	<i>Malchus</i> .....	Brian Reeve
<i>Servant</i> .....	David Alexander	<i>First Jew</i> .....	Glyn Conway
<i>Master of the House</i> ...	Stephen Smalley	<i>Disciples:</i> Rex Buckley, William Moxon, Alan Ward	
<i>Andrew</i> .....	Patrick Campbell	<i>Director</i> .....	The Dean of Chester
<i>Judas</i> .....	Christopher Samuels		

### THE TRIAL AND FLAGELLATION

Originally performed by the Bowyers, Fletchers, Stringers, Coopers and Turners and now by the City Players

*"Faults in him I can find none, nor can Herod, nor can anyone"*

<i>Jesus</i> .....	Henry Pearson	<i>Citizens, Scribes, Townsfolk, Attendants and People of Nazareth:</i> Fiona Angwin, Kirsten Bartlett, Melanie Brown, Lucy Case, Patsy Coates, Peter Coates, Kevin Coghlan, Gillian Cooper, Bronwen Crick, Garry Farrell, Clare Fitzpatrick, Kerry Flanagan, Anthea Forbes, Aylish Franklen, Nicholas Fry, Ann Harris, Stanley Hill, Tessa Hindmarsh, Michele Holder, Liam Lusk, Jeanette Musgrave, Louisa Shepherd, Karen Wilson, Cather- ine Wendt	
<i>First Jew</i> .....	John Keay	<i>Soldiers:</i> Students of Abbey Gate College— Dominic Kay, Jonathan Kay, Mark Lawson, Michael Morley, David Price, John Ward	
<i>Second Jew</i> .....	Philip Clark	<i>Drummer:</i> From City of Chester A.T.C. Squadron	
<i>Third Jew</i> .....	Eileen Preston	<i>Director</i> .....	Liz McIntyre
<i>Fourth Jew</i> .....	Elizabeth Flanagan		
<i>Annas</i> .....	Peter Speirs		
<i>Caiaphas</i> .....	Brian Wright		
<i>Pilate</i> .....	David Hackett		
<i>Herod</i> .....	Nicholas Fry		
<i>A Damsel</i> .....	Sarah Jane Harris		
<i>Peter</i> .....	Stanley Hill		
<i>Another Jew</i> .....	Fiona Angwin		
<i>First Woman</i> .....	Kerry Flanagan		
<i>Second Woman</i> .....	Clare Fitzpatrick		

## Part Three — "The Redemption"

### THE DEATH AND RESURRECTION

#### THE CRUCIFIXION

Originally performed by the Ironmongers and Ropers and now by the City Players

*"Father of Heaven, if thy will it be, forgive them what they do to me"*

Jesus .....	Henry Pearson	Joseph .....	Fred Grabham
First Jew .....	John Keay	Thief .....	Colin Graham
Second Jew .....	Philip Clark	Citizens, Scribes, Townsfolk, Soldiers, Attendants, People of Nazareth: Melanie Brown, Lucy Case, Patsy Coates, Peter Coates, Kevin Coghlan, Gillian Cooper, Garry Farrell, Clare Fitzpatrick, Kerry Flanagan, Anthea Forbes, Sarah Harris, Stanley Hill, Tessa Hindmarsh, Liam Lusk, Karen Montgomery, Amelia Randle, Katie Whitton, Rachel Wilson, Catherine Wendt	
Third Jew .....	Eileen Preston	Make-Up: Christina Veal, Maureen Hanson, Caroline Roberts, Edwina Shepherd, Mary Blake	
Fourth Jew .....	Elizabeth Flanagan	Wardrobe Mistress .....	Marion Thomas
Annas .....	Peter Speirs	Properties .....	Mary Rigby-Jones
Caiaphas .....	Brian Wright	Director .....	Kevin Catchpole
Pilate .....	David Hackett		
Two Thieves .....	David Watson Stephen Farrell		
Centurion .....	Jonathan Wilkins		
Mary, Mother of Jesus	Jennifer Hindmarsh		
Mary Magdalene ...	Josephine Cathpole		
Mary Jacobi .....	Anne Harris		
John .....	Neil Patten		

#### THE HARROWING OF HELL

Originally performed by the Cooks, Innkeepers, Tapsters and Ostlers and now by the Wirral Teachers

*"Open up the gates of hell, you princes of pain that in darkness dwell"*

Adam .....	Don Williamson	Jesus .....	Geoff Sumner
Eve .....	Irene Oram	Archangel Michael .....	Stephen Hughes
Esau .....	Jackie Robertson	Angel .....	Tracey Rimmer
Isaac .....	Liz Robson	The Thief .....	Gareth Williams
Simeon .....	Terry Brent	Singers .....	Cally McKinnon Tricia Blythe
John the Baptist .....	Colin Humphreys	Original Music .....	Jackie Robertson
David .....	Peter Bishop	Costume Design .....	Linda Jowers made by Wirral Schools
Satan .....	Alan Powell	Director .....	Alan Barnett
Devils: Carol Austin, Pauline Moran, Karen Parry, Tracey Rimmer, Chris Potts, Cally McKinnon, Anita Campbell, Carolyn Evans, Emma Evans, Sarah Harper, Mandy Sant, Debbie Smith			

## RESURRECTION

Originally performed by the Skinners, Plaster Card Makers, Hatters, Painters and Girdlers and now by Chester College

*"He is risen, as he said, and gone to Galilee"*

<i>Pilate</i> .....	Noel Cornes	<i>Two Angels</i> .....	Toni Blant
<i>Caiaphas</i> .....	Nigel Skinner		Olivia Grisman
<i>Annas</i> .....	Keith Dixon	<i>Mary Jacobi</i> .....	Paddy Nicholls
<i>Three Soldiers—Colphram</i> ...	Ceri Mears	<i>Mary Magdalen</i> .....	Susan Hyde
— <i>Jeregras</i> ...	Harry McIver	<i>Peter</i> .....	Ian Wynne-Smythe
— <i>Anoysias</i>	David Watkins	<i>John</i> .....	Timothy Lyons
<i>Jesus</i> .....	Charles Rivers	<i>Director</i> .....	Jill Edmonds

— INTERVAL —

## THE RISEN CHRIST

### EMMAUS TO ASCENSION

Originally performed by the Tailors and now by the West Cheshire College

*"Now to my Father I am going"*

<i>Luke</i> .....	Edwin Cromie	<i>Angels:</i>	Heather Campbell, Kirsty McLean, Rachel Muter, Kathryn Latham, Joanne Williams
<i>Cleophas</i> .....	Graham Sharpe	<i>Costumes:</i>	Sylvia Shanahan, Sally Studd, Maureen Chadwick
<i>Jesus</i> .....	Jeremy Clark	<i>Material Provided by</i> ...	Just Sew Fabrics
<i>Peter</i> .....	Robin Crowley	<i>Director</i> .....	Mary Farrell
<i>Thomas</i> .....	Jon Payne		
<i>Andras</i> .....	Tom Joynson		

### PENTECOST

Originally performed by the Fishmongers and now by Gobbet and Company

*"Such love in thee, such goodness, my Spirit will ever inspire"*

<i>Gobbet</i> .....	David Alexander	<i>God</i> .....	Colin McFarlane
<i>Jesus</i> .....	Alan Gaunt	<i>Director</i> .....	Bob Cheeseman
			<i>"Dance Ground"</i> directed by Wendy Peers

### THE LAST JUDGEMENT

Originally performed by the Websters, Weavers and Walkers and now by the Whole Company

*"You good and evil in this place, come to the judgement of righteousness"*

<i>Jesus</i> .....	Alan Gaunt	<i>Voices of the Damned</i> .....	Nicholas Fry Colin Graham
<i>Angels:</i>	Wotan Stilt Company—Gloria Higgins, Annamarie Higgins, Emma Humphries, Nathan Jones, Donna Jones, Ruth Price, Sonya Gilbert, Julian Ginnever	<i>Matthew</i> .....	George Harrison
<i>Voices of the Saved:</i>	Liz McIntyre, Kevin Catchpole, Jonathan Wilkin, Ceri Mears	<i>Mark</i> .....	Peter Jackson
<i>Satan</i> .....	Mary Lewery	<i>Luke</i> .....	John Ross
<i>Devil</i> .....	Colette Hanson	<i>John</i> .....	Stephen Smalley
		<i>Choreography for "The Angels"</i>	Neil Fisher