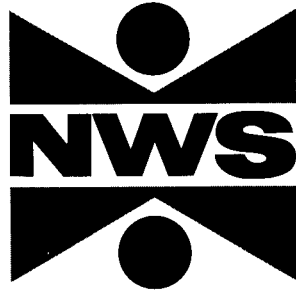


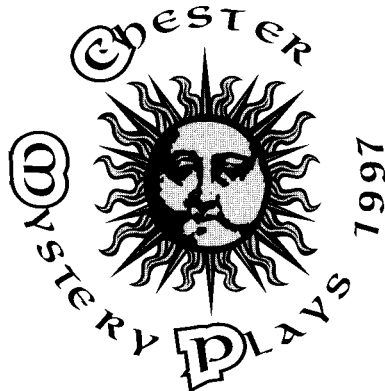
S. Vint



NWS BANK plc

***NWS BANK plc
are pleased to offer their support
to the players of
Chester Mystery Plays
and wish them every success
for the season***

CHESTER MYSTERY PLAYS 1997



6/2/97

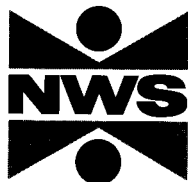
CHESTER MYSTERY PLAYS 1997



<i>Artistic Director</i>	George Roman
<i>Designer</i>	Sean Cavanagh
<i>Musical Director</i>	Laurence Roman
<i>Lighting Designer</i>	Pat Nelder
<i>Sound Designer</i>	David Kedward
<i>Administrator</i>	Louise Chaddock

30th June to 16th July 1997
Cathedral Green

*With thanks to the following whose tremendous support has made the
Chester Mystery Plays 1997 possible*



NWS BANK plc



*Chester
City Council*



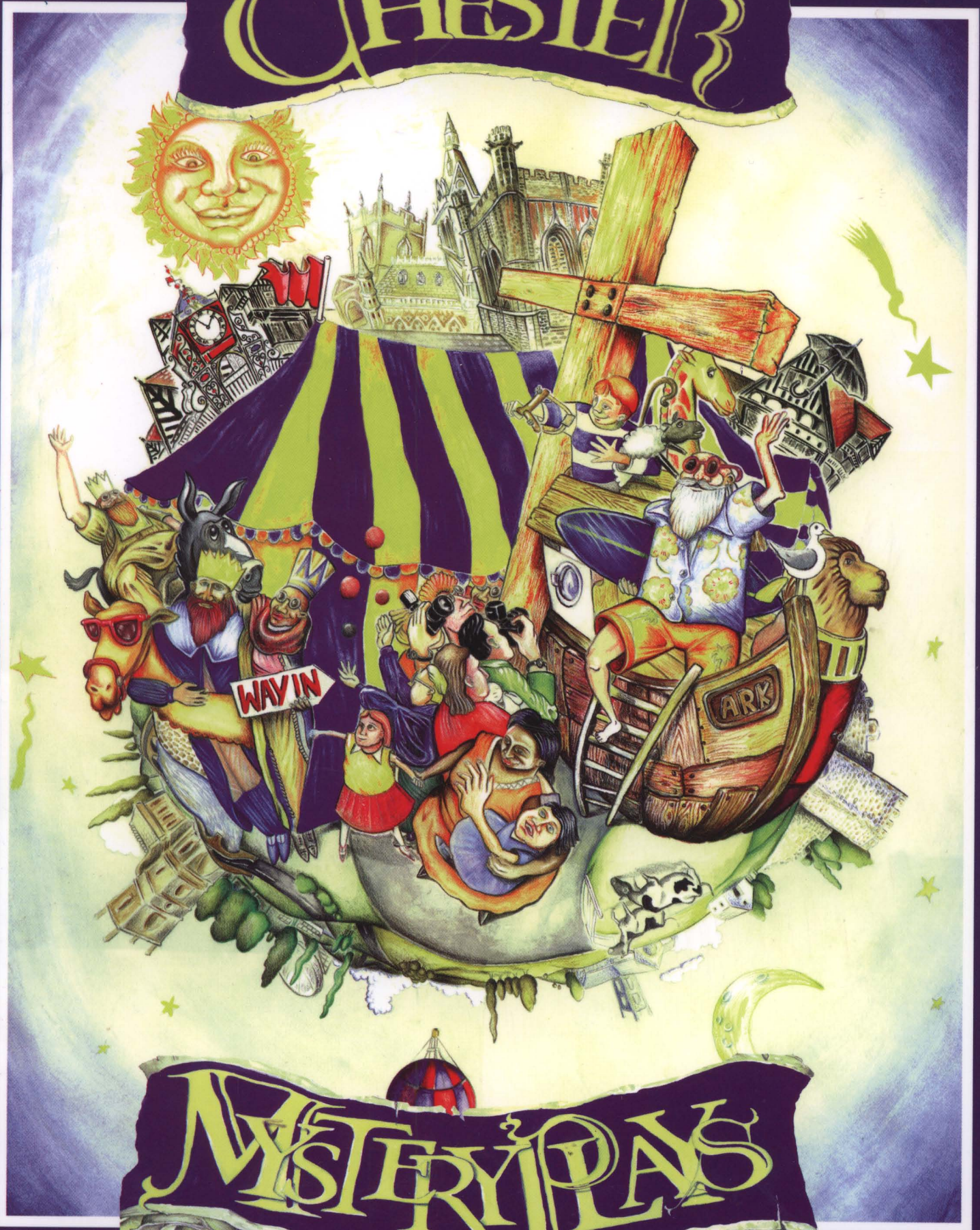
Foundation
for sport
and the arts

urencO
Ureenco (Capenhurst) Limited

Cheshire County Council
Arts Services



CHESTER



MYSTERY PLAYS

30 JUNE - 16 JULY 1997
ON CHESTER CATHEDRAL GREEN



Ladies and Gentlemen,

It is my pleasure and privilege, on behalf of my colleagues of the Board and all the cast of the 1997 production, to welcome you most warmly and hope that you will find the event both entertaining and meaningful.

Represented is the work of many different kinds of talent, creativity and labour from more than 700 local people who are involved. Amateurs alongside professional, experienced and the inexperienced all with the one objective - a production to remember. You will be witnessing the culmination of in excess of two years planning and I hope that you, the audience, will feel that we have made a fitting tribute to all those anonymous medieval theatre practitioners who once sought to present drama which could be so deeply engaging, relevant and inspiring.

The Mystery Plays were happier illuminations of a medieval age afflicted by long civil wars and the Black Death. It is impossible for us to re-enact them in the original manner - dragging carts through the streets of Chester, stopping traffic and commerce for all actors to attend and the audience to watch would not be acceptable these days! We do however hope to have echoed the variety of artistic richness which the plays traditionally offered.

This version of Chester Mystery Plays '97, the last before the millennium, is the creation of a dedicated company all working in their spare time. We are fortunate to have yet again the beauty of Chester Cathedral as the backdrop and for this we are indebted to the Dean and Chapter for their support and use of the grounds.

In reviving what is a precious part of not only Chester's but Britain's cultural heritage, the staging of such a treasured event must be recognised not only in terms of artistic endeavour but essentially as a continued act of faith.

My thanks for your support.



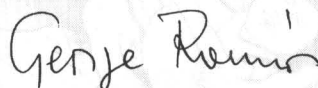
JOHN ROSS, OBE, JP
*Chairman of the Board
Chester Mystery Plays Ltd.*

MY CONCEPT OF CHESTER MYSTERY PLAYS by GEORGE ROMAN

This ancient selection of Bible stories was to remind the largely illiterate medieval audience of their religion, their duties and the essential wisdom and goodness of the Christian message. The performances of the Chester Cycle were a great celebration of faith, the production a source of considerable civic pride to all involved. I found rethinking the meaning of the Cycle an inspiration, conceiving of the Plays a foundation of contemporary metaphor, telling us about human anxiety, hope, wisdom or failure as depicted in the distant past. Yet here are issues and events we still have to confront today, the choices we have to make; here we can recognise the valid challenges ever present in our daily lives. We fail as our predecessors failed - or sometimes we succeed a little bit.

It was not difficult to unite the very different groups of the company under a contemporary conceptual banner. The real challenge was to create a harmony of styles while supporting and encouraging the individuality of the performing groups with their diverse facilities, resources and creative abilities.

The unifying source has been not just their most exceptional commitment and enthusiasm, but their depth of understanding of their magnificent source material.



ARTISTIC DIRECTOR

CHESTER MYSTERY PLAYS LIMITED

Chester Mystery Plays is a company limited by guarantee, formed for the purpose of presenting the Chester Cycle of Plays. The company, which is a registered charity, is non-profit-making and any surplus arising from the 1997 production will, after payment of all expenses, be devoted to subsequent productions.

MEMBERS OF THE BOARD

DIRECTORS

John Ross *Chairman* Ian Sanderson *Honorary Secretary*
Peter Jackson *Honorary Treasurer* Derek Brown *Honorary Associate Treasurer*

Helen Allison
Susan Campbell
Judy Cheeseman
Gwyn Evans
Nicholas Fry
George Harrison
Susan Kippax

Dorothy Leaman
Robin Mosley
Cllr. Lilian Price
Sylvia Selzer
Bill Smith
Cllr. Gordon Smith

Jo Sykes
Peter Tilston
Marion Warrington
Grishilda Wasley
Dolores Whitton
Joan Wren
Brian Wright

EX-OFFICIO MEMBERS

The Very Revd. Dr. Stephen S. Smalley *The Dean of Chester*
Cllr David Evans *The Lord Mayor of Chester*

AUDITORS Henry R Davis & Co, Chester INSURERS Robinson-Leslie Ltd, Chester

CHESTER CATHEDRAL 'BUILDING FOR TOMORROW'

A message from the Very Revd. Dr Stephen S. Smalley, Dean of Chester

For centuries Chester Cathedral has been the heart of this beautiful city, and the local people have been privileged to share in the construction and development of this great building.

At present we are especially fortunate to be involved at an historic moment in the life of this church, with the work being carried out to re-lay the nave floor and install a heating system. The cleaning of the nave ceiling will also be a dramatic improvement.

Today, in all areas of life, we struggle to balance the need for conservation with modernisation.

In the great Cathedrals there is an added dilemma that the worship of God must take precedence over tourism, and the use of churches for secular events such as concerts. I am confident that the nave floor project, and others being funded from our Appeal "Building for Tomorrow" will show that we have dealt sensitively with the issues, and have made a valued contribution to the life of this, the fourth most visited Cathedral in the land.

It is good that, at this time of change, we are host, once again, to the Chester Mystery Plays.

This cycle of medieval plays speaks of God's presence, and helps to educate people in our faith. But they also remind us, not only of the traditions of the past, but of the future. For each new presentation of the Chester Mystery Plays brings a newness to the telling of an ages old story. This ensures that generation after generation will find beauty and enlightenment in the staging of this marvellous account of the redemption of mankind.

Stephen Smalley

STEPHEN SMALLEY

❁ HISTORICAL NOTES ❁

Chester Mystery Plays-more appropriately called 'The Whitsun Plays' in Tudor documents - were one component of a calendar of shows, ceremonies and processions which punctuated the civic year and imaged the community and its values. Very few towns had the economic and administrative resources to stage such sequences of plays, tracing God's interventions into human history from the Creation to the Last Judgement and performed by the trading and manufacturing organisations (the guilds).

We do not know when Chester began such productions. A 1422 document records a dispute between the Ironmongers and the Carpenters about entitlement to assistance in producing their plays in a 'Corpus Christi Play'. This was evidently part of the celebration of the Feast of Corpus Christi (varying between 23 May and 24 June), when the clergy and the city companies proceeded with the consecrated Host from St. Mary-on-the-Hill to St. John's. We have no text and sparse records of this play but, as apparently a 'Creation-to-Judgement' play, it seems the forerunner of our 'Whitsun Plays'. It vanishes from the records in 1472 but a pre-Reformation text indicates that in the sixteenth century the clergy took over responsibility for a play on Corpus Christi Day.

The first record of the plays at Whitsun is a 1521 agreement between the Flounders, Pewterers and Smiths. Fuller details are in a proclamation for the Plays composed by William Newhall, town clerk 1531-2, which suggests a relaunch of the Plays on a new and more ambitious scale. Records are progressively more plentiful thereafter, and it becomes apparent that the Whitsun Plays were presented by the guilds in three parts on the Monday, Tuesday and Wednesday of Whitsun week and were performed on mobile stages or 'carriages' manhandled in sequence through the streets to a number of appointed places ('stations').

The notes of the antiquarian Archdeacon Robert Rogers of Chester (ob. 1595), lovingly copied in 1609 by his son David, describe the route.

The first station was at the Abbey (Cathedral) Gate, before the clergy; the second at the High Cross in front of St. Peter's and the Pentice, Chester's administrative centre, before the mayor and the aldermen; then down Watergate Street, and into Bridge Street by way of the back lanes. Rogers mentions measures to control the large crowds visiting the city for the plays and the relays of messengers co-ordinating the movement of the carriages round the various stations. The Banns - a verse announcement proclaimed on St. George's Day - describe elaborate carriages displaying, for example, the fine cloths of the Mercers and costly wares of the Dyers. This was drama on an epic scale, befitting its epic subject. It involved the whole community, not only in its 250 speaking parts, but in the large numbers of extras, the 'putters of the carriages', those who assembled and dressed the carriages, prepared the costumes, text, etc.

Cestrians regarded the Plays as an important link with their past. The Banns lend authority to a tradition about the Plays' origins - that they were written by the famous monk-historian from St. Werburgh's Abbey, Ranulf Higden (entered 1299, died 1364) and taken up by the city under its first mayor, Sir John Arneway (allegedly, 1326-28). The resulting date of the later 1320's for first performance would make Chester's the earliest Cycle in England, but unfortunately Arneway was not the first mayor; his mayoralties occupied 1260-76. Nevertheless, these erroneous traditions gave the Plays a special place in the minds of Cestrians.

Hence the city made recurrent attempts to continue the productions in the later sixteenth century in the face of opposition, both local and national, to the Plays' alleged 'popish' nature, their 'blasphemous' impersonations of the Deity, and their expense. In the sixteenth century, the city fathers had to authorise productions, and they did not agree to do so every year. But mayor John Hanky ignored an arch-episcopal prohibition and staged the Plays in 1572. In 1575 the city produced the Plays over four days at Mid-summer. But when the mayor, Sir John Savage, was hauled before the Privy Council to explain that decision, the warning was clear enough to prevent any further attempts - though the Shepherds' Play was staged at the High Cross in 1577 for the theatrically-minded Earl of Derby and his son Lord Strange.

Another manifestation of this unusual regard is the preservation of Chester's play-text. Between 1591 and 1607 the full cycle was copied out at least five times by or for local clerics and antiquarians. Three manuscripts of part or all of individual plays also survive. To those copyists we owe the possibility of reviving the cycle today. Once again, the city in this present moment, and we as audience, are placed within the great universal history of God. Enacting the signs and miracles of the past, Chester's plays remind their audience through the final speeches of the four evangelists that we now possess God's redemptive plan which many generations only glimpsed in part.

Professor David Mills
University of Liverpool

❁ THE TRANSLATION ❁

Chester is uniquely lucky in its mystery cycle. It possesses a near-complete text and fascinating documentation of early performances, and so we have the opportunity to revive medieval tradition on a scale unmatched by the performances of other cycles.

We are performing 18 of the 24 plays that survive from the sixteenth century manuscripts, themselves the record of a tradition going back centuries earlier.

With our mixture of professional and amateur involvement, we can present a community based event close in spirit to the festivals that were once central to the life of Chester and other cathedral cities. Audiences who expect modern (or Victorian?) piety from the Plays may be shocked; but the medieval citizens who wrote, performed in and enjoyed the Plays were confident enough in the belief that they presented the truth of their world, of its history and its place in God's plan, that they could allow comedy, grotesque and even bawdy, to be part of their vision of man's relation to God.

The Plays take us, very directly, to a world where the human and the divine meet, sometimes in conflict, but finally in harmony, and the vast span of the cycle unfolds as a presentation of the history of the universe, from its creation to its end.

At the centre of this for the medieval Christian was the salvation of man by Christ, the son of God, whom God sends to live with human beings, and eventually to die for us. So the first part of our cycle shows the origin of sin, when first the rebel angels and then the first man and woman reject the goodness of God, and then the coming of Christ to earth, his birth in a simple stable.

The second part shows his ministry in the world, and his clash with the earthly powers of the Roman empire, the empire that occupied Chester itself.

The third part is the drama of his death and resurrection, his return to heaven and then, at the end of all things, the

final confrontation of the forces of good and evil, at the Last Judgement.

So the Mysteries tackle the biggest subject there is, and they ground it in the day-to-day life of people like those who devised and originally performed the Plays.

The cycle doesn't have an 'author', any more than a medieval cathedral had a single artistic vision behind it... both are collective efforts, coming out of and becoming a centre for, the life of a whole community.

At some stage in the early history of the cycle someone, or some group of people, settled down to put the Plays into a fixed form, to regularise the language and to make sure there was nothing heretical in the religious ideas presented. Each play was rehearsed and staged by a separate guild, or trade organisation, who would compete with each other to produce impressive effects and lively staging. All these would be under the central authority of the 'official' text.

In many ways our staging follows the same pattern. To produce a text for performance in three parts, I cut and lightly restructured the surviving sixteenth century texts into eighteen plays. With each play given by a different group we have built up a variety of styles of performance; anything is possible, as long as it works; that is, as long as it brings out the humour, the story-telling and the magic of these robustly entertaining plays.

I have updated the language to make it accessible to a modern audience, while trying to avoid any too obviously modern words. There is enough of a continuity between late medieval and modern English to make this possible. In a way I am not so much a translator, as the latest in the tradition of the Chester scribes, preserving the traditional text by regularising and updating its style.

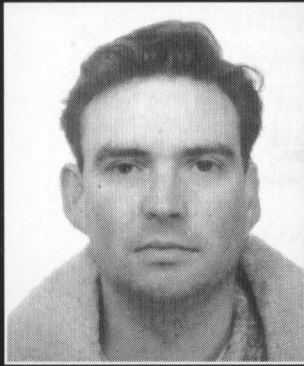
Now during the weeks of performances and on-site rehearsals, Chester Cathedral has again magnificently united the hundreds of actors, musicians and technicians descending on Cathedral Green to bring Chester's other great medieval monument, its Mystery cycle, alive once more.

Dr. Edward Burns
University of Liverpool



TEN ACTORS PORTRAY JESUS

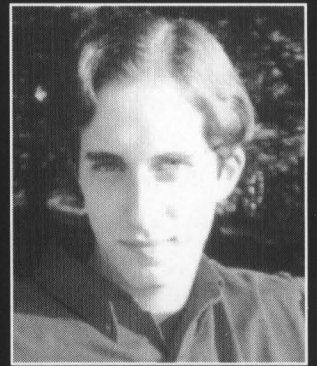
PART II - 'MIRACLES'



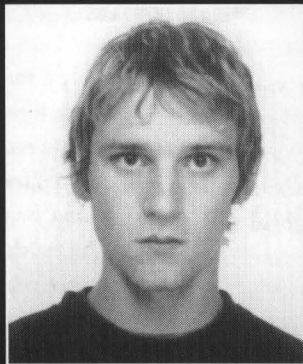
The Temptation
Tim Davenport



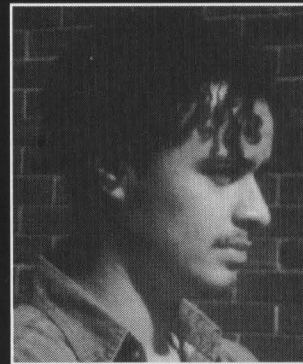
The Healing
Garry Bird



Judas
Adam Irvine



The Last Supper
Alistair Hake

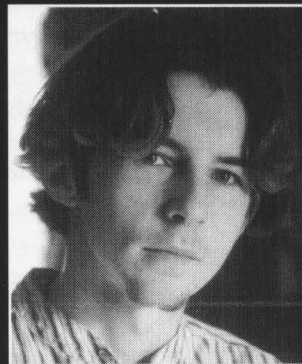


The Trial
Duncan Crompton

PART III - 'HELL'



The Crucifixion
Kieran Earley



The Harrowing of Hell
Paul Quinn



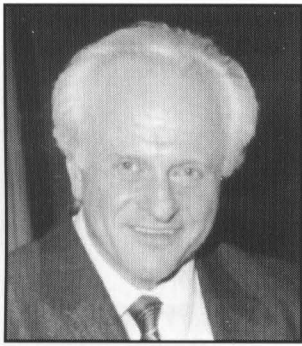
The Resurrection
Markku Arokanto



The Ascension
Neil Turner



The Judgement
Richard Gibson



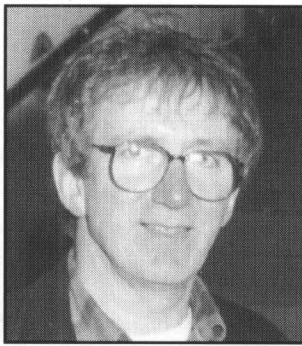
GEORGE ROMAN
Artistic Director

Born in Hungary, George fled Budapest at the time of the revolution in 1956 having first earned a first class honours degree in directing at the Hungarian Academy of Theatre and Film. In England he studied at the Bristol Old Vic Theatre School and trained as a TV director at ABCTV.

He has since blended theatre work with academia, having directed over 80 plays, 10 operas and many TV dramas and documentaries, and lectured at the Universities of Swansea, Exeter and London's Central School of Speech and Drama. Last year he was appointed to the Academy of Live and Recorded Arts.

His committee work has included chairmanship of the International Theatre Coordinate, ITI drama conferences with Arnold Wesker and membership of the TV South West Arts Panel. Awards include the Golden Palm, ITV's Best Comedy Production of the Year, Best Drama at the San Antonio Film Festival and a visiting Fellowship at Cambridge University in recognition of his original interpretation of the classics.

A veteran of major community drama projects, George has also been artistic director at Exeter's Northcott Theatre (86-91), Billingham's Forum (67-70) and first artistic director at Theatr Clwyd (75-85). Now based in London, he welcomed the chance to renew his links with the Chester area.

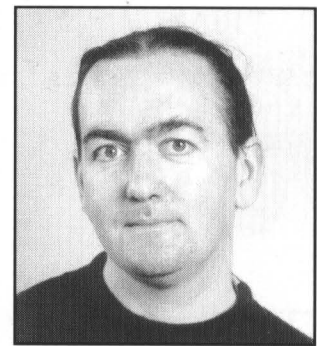


SEAN CAVANAGH
Designer

Sean trained as a theatre designer at the Central School of Art and Design and RADA. He has worked for many theatres throughout the UK and abroad and is a director of the Riding Lights Theatre Company, York. Over the past 20 years he has worked regularly with George Roman on productions including *A Midsummer Night's Dream* (Theatr Clwyd), *Macbeth* (Exeter) and *Pickwick* for the Hungarian National Theatre in Budapest.

Other work includes Toby Robertson's acclaimed revival (for the first time in 400 years) of *Edward III*, at Cambridge and Taormina Festivals, the premier of Christopher Neame's adaptation of Graham Greene's *Monsignor Quixote*, Robin Hawdon's adaptation of *The Old Devils*, Jeremy Brook's translations of *Enemy of the People* and *The Cherry Orchard*, Paul Burbridge's stage adaptation of *Three Men in a Boat* (Riding Lights) and *Stepping Out - The Musical*. Recent touring productions include *M. Butterfly*, *Outside Edge*, *The Dark Side* and the musical *The Sound of Fury*, based on the life of Billy Fury.

West End credits include *The Tempest*, *Of Mice and Men* (for which he received a nomination as Designer of the Year), *Sherlock Holmes - The Musical*, *Never the Sinner*, *Treasure Island* and most recently *The Miracle Worker* (Comedy Theatre), *In Praise of Love* (Apollo), *The Roy Orbison Story* (Whitehall) and *The Aspern Papers* (Wyndham's).



EDWARD BURNS
Translator

The staging text of this year's production uses *The Chester Mystery Cycle* (Liverpool University Press), a translation of the medieval text by Dr. Edward J. Burns.

Currently a senior lecturer at the University of Liverpool, his books include *Restoration Comedy: Crises of Desire and Identity*, and *Character Acting and Being on the pre-modern Stage* (both Macmillan). He has also edited an essay collection on the poetry of the Earl of Rochester (LUP) and just completed an edition of *Henry VI Part I* for the Arden Shakespeare. A co-edited edition of *Five Romantic Plays* will be published by OUP in 1998.

Translations for the stage include Adam de la Halle's *Play of the Bower* and the *Lais de Marie de France*, both from Old French. More than 30 productions directed and designed in Liverpool, Edinburgh and elsewhere include Shakespeare, Brecht's *Man Equals Man*, Marston's *Antonio* plays, Beckett's *Happy Days* and Gluck's *Iphigenie en Tauride* (with the RNCM). Edward swims and cooks, and owns (or is owned by?) two cats.





Louise Chaddock Administrator

A career manager, Louise has the entire cast and crew of this summer's production - more than 700 people - under her wing. Not only is she the overall 'people' administrator but she is also responsible for the venue site and all the arrangements that go with it. Having worked with major corporations Premier Brands and Rank Hovis McDougall and handled budgets of up to £13m, Louise's immense organisational skills have their roots in the theatre. Assistant production manager at Nottingham Playhouse 1987-88, Louise has also managed touring theatre and been a company administrator and venue manager at Edinburgh Fringe. She graduated from Bradford in 1987 with an honours degree in business studies.

Thus well-equipped to knead the Mystery Plays into shape, Louise joined the company after working with Chester Summer Music Festival last year. She enjoys travelling, cycling, swimming, walking and gardening though has had little time for any of it recently. Married to Rob and proud guardian of an allotment, she bewails that this year the Mystery Plays have wrecked her potato crop!

Laurence Roman Musical Director

Laurence Roman's post-graduate studies in Composition at the Franz Liszt Academy, Budapest, developed into a three year lectureship at the Hungarian Academy of Theatre and Film. He then took the post of Andrew Lloyd Webber's music assistant and music executive for the Really Useful Group, involving

acting as international music supervisor for *Cats*, *The Phantom of the Opera*, *Starlight Express* and *Aspects of Love*. Laurence's musical based on the life of Marlene Dietrich - *Falling in Love Again* was first staged at the Northcott Theatre, Exeter and he has written several scores for productions in England and Wales including *Twelfth Night*, *King Lear*, *Oedipus*, *Antigone*, *The Life of Gallileo*, *The Caucasian Chalk Circle*, *The Marriage of Figaro*, *The Dog in the Manger* and *Faust*. The London Symphony and Philharmonic Orchestras have both recorded Laurence's work (one CD having been nominated for a Grammy Award), his musical *Ulysses - A Musical Odyssey* won a special commendation at last year's Vivian Ellis Prize Competition and his Violin Sonata was premiered at New York's Carnegie Hall. His latest piece for violin and piano, *Three Postcards from Spain*, will be premiered at the Kolmar Music Festival this July. Laurence composed the original music for this Mystery Plays production.

Pat Nelder Lighting Designer

Pat Nelder joined his local amateur dramatic society at the age of 14 entirely by chance. Later at university, the discovery that it was possible to get paid for something he had been doing for pleasure caused a serious threat to his college career! Thus it did not survive for long although its remaining highlights included three visits to the Edinburgh Festival and two tours of American college theatres.

Pat spent the next ten years in various British theatres and on the road with some large-scale productions. In 1978 he moved to Theatr Clwyd, where he has since lit over 70 shows for Wales' major drama venue. In London's West End he has worked on shows with stars as diverse as Jessie Matthews and Vanessa Redgrave. Currently he is Technical Manager at Theatr Clwyd.

Pat also teaches lighting design in drama courses at several colleges in the North West and North Wales, and sits on advisory panels for other institutions offering training in technical theatre.

David Kedward Sound Designer

After completing an A-Level in music technology, David moved to Liverpool Institute of Performing Arts where he is currently in the second year of a Sound Technology degree. He has worked in a wide range of areas within sound design, from live concerts and shows to recording and video post-production.

Sound designer and musical director for a show he co-wrote, *Cosmic Cafe*, he has also worked on college shows such as *Nothing on Earth* and *Under Milk Wood*, and with bands from Liverpool and Taunton, his home town.

Graham Eccles Organist

Graham recorded the music for this production in Chester Cathedral. A graduate of the Royal Northern College of Music, Manchester, and a Boddington Organ Scholar, Graham began his active role in Chester's music life in 1989 as assistant organist at the Cathedral, during which he accompanied the choir for many broadcasts and recordings. Acting Organist and Master of the Choristers for six months after the retirement of Roger Fisher and prior to the arrival of David Poulter as Director of Music, Graham was subsequently made Cathedral Organist.

He recently took the choir on tour to Sens, Chester's twin town in France, while other engagements have included organ recitals around Britain and playing with the Hallé and Royal Liverpool Philharmonic Orchestras. Accompanying them at the Proms in London's Royal Albert Hall, he has also joined the Hallé on tour to Los Angeles and performed at the Hollywood Bowl.

SANDRA BLUE

Production Stage Manager

Sandra started her career in stage management at Theatr Clwyd, following many years as a member of Clwyd Youth Theatre. She went on to work for Nottingham Playhouse, Duke's Theatre, Lancaster, Oldham Coliseum and Pitlochry Festival Theatre. More recently she has specialised in production management for a diverse range of projects and companies, including Walk the Plank touring theatre ship, The Bubble Theatre, London and three large scale, site-specific community plays: *Half Year End* - Rhosllannerchrugog 1990; *Salt of the Earth* - the Winsford community play, and *The Big Splash* - a promenade performance in a multi-storey car park at Salford Quays for City of Drama 1994. Most recently she has worked for the Arden School of Theatre, Manchester, in association with the Royal Exchange Theatre Company.

STUART MYLES

Technical Co-ordinator

Stuart is currently technical production manager at the Arden School of Theatre in Manchester. Before this he was technical manager for the NIA Centre in Hulme, a multi-cultural arts centre and venue; and technical

co-ordinator / engineer with Communications Technology, specialising in multi-media, staging and conference production. He also works as a freelance lighting designer and lists *The Big Splash* - Salford's community play in a car park, as one of the more unusual productions he has lit.

MIKE SMITH

Construction

After leaving the Duke's Theatre, Lancaster where he was construction manager for ten years, Mike has worked freelance as a scenic carpenter and welder for companies such as M6 Theatre, Rochdale; Theatr Powys, The Front and Welfare State International. More recently he has been chief engineer and pyrotechnician for Walk the Plank Marine Theatre Company.

FRANCES NUNN

Assistant to the Designer

Frances graduated in theatre design from Nottingham Trent University in 1990. Since then her wide experience includes touring theatre for companies such as Action Transport (Ellesmere Port), Open Hand (Leeds) and Theatre Nova (Birmingham). Between 1992-95 she was theatre design leader for Cheshire Drama Education Services,

running design workshops in schools, co-ordinating and running the design elements of the County Summer Schools, and designing for the County Youth Theatre. Since 1996 she has been working as a freelance theatre designer and recent projects have included a community carnival for Warrington Arts Unit, a mural for the Children's Society and a number of productions for Riding Lights Theatre Company in York. Frances is also a part-time lecturer in design at the Liverpool Institute for the Performing Arts and is a member of the Pyramid Arts Working Group for Warrington Arts Unit.

EILEEN JEFFERY

Publicity

A professional journalist, Eileen has been travel editor of *Elle* and as a freelance contributed to various publications including *The Sunday Times*, *Guardian*, *Daily Mail* and *Vogue*. She has also worked in Bermuda and in the Overseas Press Office of the British Tourist Authority.

After a five-year break travelling which began by sailing across the Atlantic in a 43 ft boat, she came to Chester when the City Council employed her to promote tourism. Recently remarried, she is now freelancing again and working on book projects.

STREET CELEBRATIONS

Street Theatre Celebrations will take place in Chester city centre every day during the run of the Mysteries bringing the colourful exuberance of the plays to everyone in town, filling the streets with music, visual delights, and high energy performance. Not to be missed!

Director Mary Lewery and musical director Dave Manley, both have widespread experience performing in venues all over the country. Mary has just returned from performing as a Tyneside fishwife in the Fishquay Festival at Northfields. Dave works in the Drama Department at the University College, Chester, and is a multi-talented technician and musician.

Team includes:

Kathryn Avery, Neil Collin, Peter Collingridge, Gillian Harrison, Helen Johnson, Jamie Pugh, Christine Roberts, Matthew Windsor-Richards and students from Finland's Helsinki Institute of Art and Media, and the Turku Institute of Art and Media.

Plus visiting performances from:

Chester Gateway Youth Theatre, Mulberry Players, Park Primary School, Tattenhall; Pendleton College, Salford; Wirral Youth Theatre and other local schools and groups.

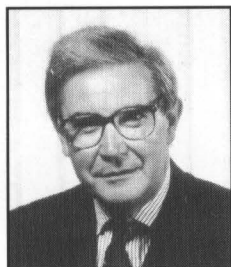
Musical Director

Dave Manley

Director

Mary Lewery

VOICES OF GOD



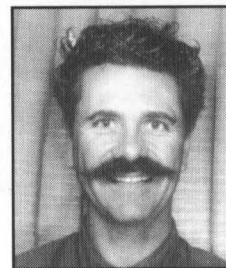
George Harrison

Professionally a District Judge of
Chester County Court



Jane Barth

English and Drama teacher at
Tarpoley High School, Cheshire



Allan Owens

Senior Lecturer in Drama at
University College Chester

PART I- 'HEAVEN'

CREATION AND FALL

Supported by: CREWE AND NANTWICH BOROUGH COUNCIL
NATIONAL LOTTERY A4E GRANT THROUGH THE ARTS COUNCIL OF ENGLAND

Originally performed by the Bakers, Tanners, Drapers and Hosiers and now by the
Dane Bank Theatre Players.

The Dane Bank Theatre Players are a group of students from South Cheshire College, Performing Arts Department, and pupils from St. Mary's R.C. Primary School, both based in Crewe. All involved have a real commitment to the performance of live theatre and some will be taking this commitment on into their professional, working lives.

Cast

Adam Michael Smith
Eve Louise Smith

Lucifer Chris Lonsdale
Lightborn Edward Bedford

The Students of South Cheshire College: Mike Bodimeade, Michael Burt, Emma Burrows, Katrina Cartes, Hellen Edwards, Jamie Gordon, Aiden Guerett, Rachael Hall, Carolyn Hempton, Pat Holdway, Kate Lines, Beki Marlow, Sue Rotherham, Andrea Serridge, Vicky Young

The Pupils of St. Mary's R.C. Primary School:

Laura Alexander, Amy Baddely, Stephen Birchnell, Danielle Kay, Nadia Latham, Sian Lawton, Joanne Marsh, Emma Watson

Designer Matthew Crummack
Director Kathy Sharpe

Acknowledgements: Mary Lewery - artist-in-residence - for creatures of the Garden of Eden; and staff and parents of St. Mary's R.C. Primary School.

CAIN AND ABEL

Originally performed by the Tanners and now by **Light Box**, the drama group from the Northgate Church, Chester.

Over the years, Northgate Church has demonstrated the wealth of talent among its many members by performing both in churches and on the streets. They have used their skills to tell the Good News of Jesus Christ to a modern generation, in the same way as the medieval players performed centuries ago. *Cain and Abel* shows the destructive power of man's selfishness and jealousy.

Cast

Cain Rob Pomeroy
Abel Peter Wooding

Adam Les Acton
Eve Sharon Wooding

Designer Julie Mitchell
Director Gerald J. Sidery

NOAH'S FLOOD

Supported by: CHESTER TOY AND DOLL MUSEUM

Originally performed by the Waterleaders and Drawers and now by La Brigata.

Fielding a cast of thousands, this play has left no community stone unturned in its search for players. Unsuspecting citizens have been accosted on the streets and asked to join in. This is *Noah's Flood* with a difference.

Cast

Mr Noah Robin Goddard	Mrs Cham Jane Ashton
Mrs Noah Janice Webb	Japhet Dyfrig Lewis
Shem Mike Collie	Mrs Japhet Alison Davies
Mrs Shem Ruth Sothern	Young Child Sally Ashton
Cham Jonathan Lees	Gossips Pauline Light, Sue Ashton

Animals:

Stag Susan Davenport	Mice Gina Walton, Leslie Molyneux
Dogs Pam Lloyd, Peter Chase	Peacock Jacqui Joinson
Chimps Nicky Bull, Inge Hancock	Lions Ann Tipple, Stephen Taylor
Pied Wagtails Peter Blinston, Nicholas Wood	Bears Mark Bell, Richard Hesselwood
Hedgehogs Penny Caswell, Carol Williams	Vultures Ian Chapman, Ken Hazard
Rat Val Jones	Birds of Paradise Susan Moore, Aileen Hall
Butterfly Jean Chaloner	Foxes Liz Clark, Yvonne Roder
Wolves David Ledward, Sue Roberts	Pig Paul Shepherd
Giraffes Fiona Davenport, James Gray	Horse William Jones
Dove Holly Tyson	Elephants Philip Elloy, Jason O'Brien
Raven Pete Cherry	

Army: Abbots Park Detachment: S/Sgt K Watson, Cpl A Wilson, L/Cpl M Dodd, L/Cpl T Jones, L/Cpl C Borthwick, CDT N Stephen, CDT V Crofts, CDT B Cooke

Mulberry Staff and Friends: St. Michael's Church: Ben Hancock, Rikki Hancock, Jermaine Hancock, Sue Regan, Yvonne Roder, Carol Beck, Paulette Gower, Julie McClean, Sheila Brookes, Kath Mgeough, Sue Hughes, Esther Young, Amelia Stockdale, Edwin Stockdale.

Kick Boxers Philip Williams, Christopher Goodwin

Parade Band Chester Catholic High School (Mrs Rachel Barlow)

Water Music Band: Saltney Wood Memorial C.P. School, with St. David's High School, Saltney

Sophie Abbot, Charlotte Cheers, Sarah Egerton, Kelsey May Gillam, Andrew Hamilton, Craig Jones, Hannah Jones, Damon Kealey, Andrew Keir, Kirsty Lowe, Lyndsey McCallion, Kate O'Reilly, Faye Partington, Kathryn Quayle, Stephen Rodham, Stacey Speed, Peter Walsh, Suzanne Willets, Barbara Lloyd, Nan Montgomery.

Flood: Chester Gymbods: Lesley Haskew, Ruth Shannon, Philip Kingsley, Carly Beattie, Emma Jones, Laura Jones, Lucy Adamson, Alice Rydeard-Bone, Claire Baines, Alex Ronald, Rebecca Dunne, Jade Ansell, Kate Collins, Beth Nicholas, Sarah Knox, Sian Roberts, Nina Flanigan, Ton Howse, Harriet Howse, Freya Wales, Elizabeth Trinder, Sally Sears-Black, Joanne Kitchin, Amy Atkinson, Emily Pimm, Charlotte Jones, Shelley Tomlins, Alice Steaton, Andrea Cameron. **Hammond School:** Mandy Hatfield, Adele Jones, Celia Hingston, Zoe Hatch, Ben Watkiss, Peter Watkiss, Richard Watkiss, Hayley McGiveron, Rachel Lindsay, Sabina Morgan Bates, Emily Johnson, Jess Nestler, Lindsay O'Ven, Laura Jones, Daisy Almond, Coral Bloom. **St. Thomas of Canterbury C.E Junior School:** Anne Marie Jones, Amanda Ellis, Penny Allen, Peter Saddington, Samantha MacGregor, Kathryn Gonst, Ella Ferris, Juliet Stephenson, Holly Dodd, Rebecca Podmore, Jake Barrett, Laura Wolk, Zoe Jones, Christopher Potter, Holly Foulkes, Ben Kyles, Lauren Scott, Nadia Weigh, Kerry Wilson, Aryanne Jones, Abigail Coleman, Josiah Mainwaring, Duncan Scammel, Cassie Fleming, Elisher Dean, Phillipa Holden, Laura Goff, Kimberley Jones, Danielle Jones, Emma McIntyre, Bonnie Wilson, John Hughes, Calum Scott. **St. Werburgh and St. Columbia R.C. Primary School:** M Morris, C Haddock, E Liddiard, J Barrett, D Harrison, K Wilson, A Boylan, R Wilson, R Moynihan, K Lunney, M Dunn, T Wright, F Woodhouse, C Emerson, L Taylor, E Yoxall, N McMahon, K Maloney.

Stage Management Gareth Dunn, Denise Garner

Designers Mary Lewery, Andrew Rodgers, Cathy Trenchfield, Jan Curran, Cilla Hassall

Costumes Tia, Raj Mathur, Suzanne Wells

Military Choreographer John Watson

Directors Kristine Szulik, Clodagh Cherry, Sue Tyson, Jane Williams

Acknowledgements: B.A.S.F. plc., Chester Zoo, The Mulberry, Canal St. Centre

ABRAHAM AND ISAAC

Originally performed by the Barber Surgeons.

Cast
Abraham Geof Atwell
Isaac Louie Mulhern
Sarah/Angel Jenni Gindra

Abraham's family and friends

Daniel Gad el Rab, Helen Morrish, Candace Lopez, Ray Bengree, Alice Robinson

Designer Cheryl Roberts

Director Charles Ryder

INTERVAL

THE NATIVITY

Supported by: THE CHESTER GROSVENOR HOTEL, BLOSSOMS HOTEL,
THE MOAT HOUSE, CHESTER, AND CRABWELL MANOR, CHESTER.

Originally performed by the Wheelrights, Slaters, Tylers, Daubers and Thatchers and now by
The Cardboard Box Company.

Cast
Gabriel Pamela Trinder
The Sybil Maureen Weldon
Mary Alex Rawnsley
Tybil Jenny Durban
Senators Jim Draper, Philip Brown
Joseph David Holdsworth
Salome Alison McLellan
Messenger Mike Cooper
Octavian Christopher Smith

Extras


Rupert Mosley, Chris Mosley, Gareth Andrews, John Wilson, Huw Jones, Andrew Herbert, Kath Woolley,
Ivor Woolley, Denise Draper, Fiona McLellan, Lucy Trinder, David Trinder, Jack Trinder, Lizzy Trinder.

Designer Claire Templeton

Costume Designer Marjorie Lingard

Director Jan McCarthy

the shepherds

Supported by:  Cheshire County Council
Arts Services

Originally performed by the Painters, Glaziers, Embroiderers and Stationers and now by the City Players.

Cast
Hankyn Chris Hocking
Harvey Keith Martin
Trudd Richard Steventon
Trowle Daniel Meigh
Trowle's Son Ryan Swainson
Shepherds' Wives Mary Capner, Jane Loudon, Lyn Armstrong
Mary Jessica Dornford May
Joseph Matthew Windsor-Richards
Angels Jenny Jackson, Wendy Healiss, Janet Rowte

Designer Victoria Hamilton

Religious Advisor Rev. John Mitchell

Director Alan Barnett

Acknowledgements: Thanks to Queen's Park High School for use of rehearsal space.

THE MAGI AND INNOCENTS

Originally performed by the Vintners, Goldsmiths and Masons and now by the City Players.

Cast

Magi Alan Barnett, Linda Manning, Jean Barnett
Angel Jayne Taylor **Soldier 1** Nicholas Fry
Herod Mike Evans **Soldier 2** Graham Atkin
Joseph Dale Jones **Soldier 3** Matthew Windsor-Richards
Doctor Peter Collingridge
Devil Peter Harrop
Messenger Sean Stockton

Women and Children Moira Anderson, Patricia King-McGee, Anna Corbett, Jane Loudon, Margaret Hoyle, David Brown, Lynne Armstrong, Dolores Whitton, Timothy Johnson, Mary Capner

Designer and Stage Manager David Glover
Costume Supervisor Jane Loudon
Director Jill Edmonds

Acknowledgements:

Carpet World for red carpet; Queen's Park High School for rehearsal space; One Off Costume Hire.

PART II- 'MIRACLES'

THE TEMPTATION AND THE WOMAN TAKEN IN ADULTERY

Originally performed by the Butchers and now by Chester Theatre Club and members of the Freeman and Guilds.

Chester Theatre Club, founded in 1944 and based at the Little Theatre in Gloucester Street, Newton, is proud to continue its involvement with the Mystery Plays which began with the 1951 Festival of Britain revival. Members have taken part in each subsequent production. The Club is pleased to welcome members of the City of Chester Freeman and Guilds into the company for this production.

Cast

Devil Malcolm Gledhill
Jesus Tim Davenport

Doctors (TV News presenters):

Sylvia Jenkins, Bill Smith, Elizabeth Stafford

Audience/Press:

Molly Massey, Ann Lewis, Robin Lewis, Kim Westlake, John White, Hilary Macnae, Felicity Macnae, Nicky Lewis, Robert Lewis, Pam Moyle, Dilys Dutton, Peter Dutton, Colin McNae

Game Shows:

Peter Thompson, Tony Kemp, Sarah Dwyer, Anthony Wheatcroft, Sylvia Jenkins, Margery Alexander, Nicky Lewis, David Edwards

Pharisees (Newspaper Reporters) Ann Massey, Tony Kemp/Sarah Dwyer

Woman Margery Alexander

Girls Lucy Saiet, Alice Robinson, Amy Cowan, Katie Martin, Felicity McNae, Jenni Brock, Candace Lopez.

Properties Kate Pickup

Designer Keith Long

Design Team George Westgarth, John Sands, Tony Kemp

Music composed and performed by Justin Brodie

Director Sylvia Selzer

THE HEALING: THE BLIND MAN AND LAZARUS

Originally performed by the Glovers and now by **Cheshire Teachers Theatre**.

Cheshire Teachers Theatre was formed in 1988 by Simon Taylor, Senior Drama Adviser for Cheshire Education Services. The company comprises specialist teachers of drama and other interested teachers. In addition to performances in Cheshire, the group have presented theatre and school performances in Germany and provided theatre workshops there. The most recent production, in February this year, was *Comedy of Errors* at the Teatro dei Riuniti in Umbria, Italy.

Cast

Preacher Gavin Cross **Invalid** Robert Edmonds
Blind Man Hugh McGoldrick **Blind man's carer** Kirsty Wiggins
1st Neighbour (Cleaner) Anita Birkbeck
2nd Neighbour (Cleaner) Julie Bird/Claire Tierney
1st Pharisee (Hospital Consultant) Gavin Cross
2nd Pharisee (Houseman) Robert Edmonds
Jesus Garry Bird **Peter** Ray Hartley
Witness Jeanette Herbert **Mary** Ally Altman
Martha Sue Welshman **Lazarus** Don Marchand
Principal Singer Janice Webb
Gospel Meeting Chester Theatre Club, Freeman and Guilds, Jo Sykes

Designer Cathy Symes
Music composed and performed by Justin Brodie
Director Sylvia Selzer

JUDAS

Originally performed by the Corvisars and now by **Neston Youth Theatre** under the direction of members of Action Transport Theatre Company.

Action Transport was established ten years ago and is now the largest professional theatre company for young people in the North West, touring schools, colleges and youth clubs throughout the area. At the beginning of this year the Youth Arts Team was introduced to work with young people between the ages of 8 and 21. The team consists of three workers - Fiona Walton, Ben Turner and Cathy Symes, who deal with drama, music and design. Neston Youth Theatre is one of two thriving youth theatres that the team run on a weekly basis.

Cast

Jesus Adam Irvine **Judas** John Leyland
Simon Lloyd Murray **Mary Magdalen** Judy Keyse
Caiaphas Phil Baxter **Annas** Sally Barnard
Pharisee 1 Richard Dodd **Lazarus** Emma James
Pharisee 2 Clare Fiander **Martha** Paula Hosker
Pharisee 3 James Tipping **Peter** Anthony Andrews
Additional Parts Michael Plevin, James Bolton, Matty Lewis, Hazel Flather

Citizen 1 Reva Bernard **Philip** Catherine Williams
Citizen 2 Emma Dollard **Janitor** Ben Huyton
Child 1 Stephanie Cordon **Child 2** Eleanor Herzog
Traders Emma Dollard, Helen Peers, Robert Garrett, Louise McQue

Citizens, Journalists and other Traders - Junior Youth Theatre

Rebecca Barton, Ben Ford, Laura Bennett, Kerry Egner, Gemma Ellis, Daniel Evans, Jeffery Evans, Paula Longhurst, Jenny Gill, Carole Goodwin, Rebecca Hibbert, Corinna Long, Sarah Smith, Kate Normington, Rachel Page, Jamie Peersbow, David Smith, Laura Jackson, Heather Smith, Alice Taylor, Kim Ward

Designer Cathy Symes
Music Ben Turner
Music Technical Advisor Phil Brissenden
Technical Advisor Alan Clivery
Director Fiona Walton

Acknowledgements

We should like to thank the University College Chester, West Cheshire College and Dave Manley.

INTERVAL

THE LAST SUPPER

Originally performed by the Grocers, Bakers and Millers and now by a **Cheshire Youth Theatre Group**.

Cheshire District Youth Theatres operate weekly. There is also a county-wide Student Theatre Company currently involved in an exchange project with a group in Soweto, South Africa. The annual residential Summer Production Course involving over 100 young people takes place in August with performances in September. Throughout the year there is the opportunity to be involved in special projects. The Mystery Play Company has been created specifically to perform *The Last Supper*.

*"Come to me and you shall hear
The Feast of Easter draws near"*

The group has explored the idea of European and South American pre-Easter carnival celebrations as the context for the play.

Cast

The Revellers: Jesus and his Disciples:

Alistair Hake, Amanda Couzens, Gemma Edwards, Melissa Durston, Amberley Smith, Pauline Lord, Heather Cassidy, Gareth Newton, Michael Grainger

Boulevard Cafe Proprietors:

Louise Elliott, Julia McShane

Armed Guards

Derek Nicol, Leonie Harter, Simon Bugg, Russell Wiseman

Street Kids Members of Halton Junior Youth Theatre

Tourists Members of Cheshire Teachers' Theatre Company

Designer Laura Smith

Music Chester School of Samba

Director Sue Welshman

THE TRIAL

Supported by:



CHESTER CITY COUNCIL
CHESHIRE COUNTY COUNCIL (ARTS SERVICES)
NORTH WEST ARTS BOARD

Originally performed by the Bowyers, Fletchers, Stringers, Coopers and Turners and now by Chester Gateway Youth Theatre.

Chester Gateway Youth Theatre has groups for those aged from 4 to 26, for young people with special needs and for creative writing. Groups meet regularly to learn and enjoy theatre skills and to devise, write and perform shows. Further information from Adam Fresco, Youth Theatre Director, Chester Gateway Theatre.

*"Weep not for me. The time will come
When tears for your own children
You will shed tenderly."*

Cast

Jesus Duncan Crompton
Pilate John Roberts
Simon Claudia Glazzard
Damsels Kate Houghton, Zoe Nettleship
Annas Emma Bennett
Herod Rachel Cleverly
Guards Matt Bennett, Robert Pih
Caiaphas Jenny Wiezien
Peter Linda Whittle

Chorus

Alex Armstrong, Rhiannon Ault, Ciro David, Penny Davies, Daniel Gad el Rab, Soraya Gad el Rab, Kathryn Halstead, Emma Innes, Helen Johnson, Donna Lalek, Simon Malpas, Anna McLaughlin, Mark Mills, Emma Murray, Anthony Parkinson, Dan Phillips, Emily Price, Clare Quinn, Matt Russell, Lou Simpson, Clare Spinks, Dominic Stephens, Rebecca Stockdale, Peter Williams.

Stage Managers Eli Atkinson and Emma Ralphs

Devised and directed by The Cast with Adam Fresco and Daniel Meigh

Acknowledgements

Chester Gateway Theatre, and all those parents, families and friends who helped us along the way.

THE COMING OF ANTICHRIST



Originally performed by the Dyers and now by Sir John Deane's College A-Level Performing Arts Students.

*"In sin engendered first thou was
In sin thy life thou followed has.
In sin your end is, you get no grace
You have ruined many a one."*

Acknowledgements

Special thanks to Walkers Coaches.

PART III- 'HELL'

THE CRUCIFIXION

Supported by: BRITISH NUCLEAR FUELS
MEREDITH'S COACH HIRE, MALPAS
CHESHIRE CONSTABULARY
1 PWO, THE DALE BARRACKS, CHESTER

Originally performed by the Ironmongers and now by the **Bishop Heber Players**.

Bishop Heber Players are a mixed group of adults from the local Malpas community and students from Bishop Heber High School. This is their second appearance in the Chester Mystery Plays.

Cast

Caiaphas John Parker / Tom Kenny

Jesus Kieran Earley

Pilate Penny Seeger

Annas Stephen Woosey

John Robert Frost

Centurion Emma Reece

Mary Mother of Christ Chris Faithfull

Mary Jacobi Clare Barlow

Josephus Jonathan Latham

Mary Magdalen Alex Clemens

Mary Salome Lyanne Mansfield

Longinus Michael Carding

First Thief Chris Downs

Second Thief Jamie Martin

Prison Guards Charlotte Bode, Catherine Eve, Louise Hughes, Penny Whalley, Tom Kenny,
Richard Naylor, John Roberts, Rob Pih

Roman Soldiers William Parker, Luke Perritt, Bethan Twigge

Crowd

Susannah Hill, Sarah Barlow, Rosemarie Harmshaw, Sarah Howell, Laurie Hanlon, Laura Dickinson, Julie Walker, Trina Davies, Nicola Owen, Vanessa Madeley, Sarah Richardson, Natalie Wilson, Kate Oakley, Kate Williams, Zoe Gregory, Emma Taylor, Faye Bentley, Nicola Boone, Lisa Bowie.

Musicians

Mark Faulkner, Jo Mooney, Lisa Williams, Kim Woolam, Marianne Haynes, Vicky Thomas, Rachel Glennie, Vicky Grimmer, Aisling Smith, Mary Parmentier, Laura Harnsworth, Sarah Kennerly, Helen Threlfall, Eleanor Parrott, Sarah Gaden, Kate MacKay, and members of Heber Voice Works.

Stage Managers Tim Jones, Neil Collins

Artistic Director Anthea Millier

Music Director Alison Corten

Director Karen McKay

THE HARROWING OF HELL

Supported by: WEST CHESHIRE COLLEGE
TAKE FIVE
NATIONAL LOTTERY GRANT THROUGH THE ARTS COUNCIL OF ENGLAND

Originally performed by the Cooks, Tapsters and Ostlers and now by **West Cheshire College**. The company comprises students and staff from West Cheshire College and their friends from the community of Chester.

Cast

Geof Atwell, Liza Barrett, Jo Beggs, Amy Bonsall, Phyllis Brighthouse, Pam Byrne, Anne Marie Chazeau, Jane Cresswell, Tim Cunniffe, Joyce Dalton, Sarah Fairchild, Victoria Field, Kevin Francis, Emily Georghiou, Adam Holloway, Jan Hughes, Rachel Hutchings, Christine James, Carol Maynard, Stephen Newby, Jon Payne, Val Pettitt, William Proctor, Paul Quinn, Amy Robinson, Jenny Sims, Ruth Spencer, Iain Tidbury.

Production Russell Kirk and Peter Southcott
Music Kevin Francis and Andrew Daly
Acknowledgements Vehicle made by Ed Walley

THE RESURRECTION

Originally performed by the Skinners, Plaster Card Makers, Hatters, Painters and Girdlers and now by **Students from the Helsinki Institute of Art and Media and the Turku Institute of Art and Media, Tutvo, Turku Polytechnic, Finland.**

University College Chester has, over the years, developed strong links with many academic and training institutions in Finland. The decision of the Mystery Plays Board to invite our European partners to participate in the 1997 production welcomes them into the very heart of our community. The students of these two Finnish Higher Education Institutions are studying to be directors of dramatic expression. Their 3 - 5 years training combines classical director-orientated drama studies with drama processing methods. In the course of their studies they practice not only the work of a director but also other fields of theatrical work from acting to writing, from light and sound design to stage singing. They are directed by two professional freelance drama theatre practitioners who are graduates of Tutvo.

Cast

Pilate Mikko Saaristo	Jesus Markku Arokanto
Caiaphas Juha Kannaste	Mary Jacobi Kati Siren
John Heta Haanpera	Angels Saana Harju, Katri Luukkonen, Lotta Savolainen
Annas Tanja Vepsalainen	Mary Salome Anu H Pitkanen
Peter Tuomas Kokko	Mary Magdalen Soile Makela

The Soldiers:

Colphram Lotta Ora
Jeregras Saana Lavaste
Aroysias Juha Viitamaki
Coordinators Marja Louhija, Helsinki Institute of Art and Media; Pieta Koskenniemi, Turku Polytechnic; Allan Owens, University College Chester

Costume Lotta Savolainen
Music Sanna Harju (using Finnish folk songs)
Physical Training Katri Luukkonen
Directors Kirsi Huotari and Anita Koistinen

INTERVAL

THE ASCENSION AND INTERLUDE

Originally performed by the Tailors and now by **members of the congregation of the Parish Church of the Holy Ascension, Upton-by-Chester.**

*"You my brothers, take my blessing
For to heaven I must go."*

Cast

Luke	Chris Reeve	Cleophas	Jennifer Jackson
Jesus	Neil Turner	Andrew	Chris Walters
Peter	David Capstick	Thomas	Glyn Conway
John	Colin Bain	Angels	Sally Symes, Vera Gerrard
Gobbett	Steven Pinder	Dancers	2nd Upton-by-Chester Guide Company
Other Performers	Bill Symes, Margaret Bain, Geoff Bennett, Mike Curtis, Mark Curtis, Mark Burgess, Arnold Rogers, Isobel Samuels, Timothy Hayle, Gwen Rogers.		

Music Glenn Crooks
Director Glyn Conway

*"My spirit to them will appear
To make them wiser than they were."*

THE JUDGEMENT

Originally performed by the Fishmongers and now by the **Saved and Damned Theatre Company.**

Cast

Jesus	Richard Gibson
Satan	Nicholas Fry
Devils	Sheila Lister, Lynette Ash, Fraser Moir, Glenys Potter
Angels	Amy Bonsall, Rowena Reekie
John	Peter Hobson
Matthew	Matthew Windsor-Richards
Mark	Steven Johns
Luke	TBA

The Saved and the Damned

Theresa Rose, Phylis MacWhirter, Anne Rayment, Laura Johns, Pearl Evens, Lorne Halliday, Ian MacWhirter, Emily Fry, Rebecca Ash, Scott Turnbull, David Barrett, Cathy Johns, Alan Sears, Lorna Sears

Designer Frances Nunn
Director Richard Naylor





• ADMINISTRATION STAFF •

*Sarah Phillips
Vivien Gear
Kathy Shephard
Jessica Dornford-May*

• FRONT OF HOUSE •

*C Ainsworth, A Ashton, L Bailey, C Ball, J Barker, T Barker,
R Bartlem, Lady Bibby, B Chapman, J Collinridge, M Crudge, P Dobson,
J Driver, C Elliot, J Evers, N Farrall, R Griffiths, N Hewitt, J Harrison,
E Isom, K Jackson, J Jones, S Jones, S Lane, G Lightfoot, M Lightfoot,
R Merick, A Morgan, W Morgan, C Morris, R Mosley, K Naylor,
F Newham, D Owen, P Powell, Cllr. L Price, M Robinson,
Col. Ropes, M Ropes, H Ross, S Rudd, M Sands, Y Slivkin,
P Spiers, K Sykes, J Tatton, P Tilston, M Ward, T Williams,
J Wilson, B Wright*

• PRODUCTION STAFF •

DSMs:

Emma Holwill (Heaven), Eli Atkinson (Miracles), Carola Cubitt (Hell).

Stage Management:

*Alan Pemberton, Rob Dawson, Carrie Brown, Neil Collins,
Diane Rimmer, Louise Simpson, Brian Dickinson and his team.*

Lighting and Sound:

*Emma Ralphs, David Kedwood, Jenny Hughes, Daniel Stenhouse,
Dave A Evans, Douglas Tyson, David Stinson, Jon Hall, Michelle Cousins.*

Design Team:

*Alan Pemberton, Debbie Cropper, Cas Baker, Ruth Brickland,
Catherine Trenchfield, Anna Dowicz*

Schools involved in making Tree of Knowledge:

*St. Mary's, Crewe; The Park, Tattenhall; Overleigh St. Mary's, Handbridge;
St. Thomas of Canterbury, Chester.*

THANKS

The Board of Chester Mystery Plays Ltd. wish to express their appreciation to:

The Dean and Chapter
David Burrows - Cathedral Administrator and his Staff
Stephen Nicholson - Cathedral Estate Manager and his Staff
The Cathedral Vergers
Christine Gibbs - Cathedral Shop

Also to the Esmee Fairbairn Charitable Trust, Ursula Keyes Trust,
The Fishmongers Company, The Gibbs Charitable Trust,
Chester City Council Amateur/Community Arts Fund,
Cheshire County Council Joint Arts Fund,
European Union of Women and the many small local groups and
organisations who so kindly made a financial donation.

*And to the following whose kind help and involvement has
made a vital contribution to the 1997 production:*

Austen Lewis Ltd.	Chester Summer Music Festival	The Arden School of Theatre in assoc. with the Royal Exchange Theatre
The Town Hall Keepers	Peter Crabbe	The City Freemen and Guilds
Barclays Bank PLC	Barbara Eifler	Liverpool Institute of Performing Arts
Inger Trevor-Barnston	W.H. Evans & Son Ltd.	Merediths Coach Company
University College Chester	Cheshire Fire Service	NADFAS - Tarporley and District
Mark Bond	Hoole Lawn Tennis Club	Nat West Bank PLC
Hilary White	Chester Leather Goods and Service	Geoff Newcombe
Bookland	Canda Copying Ltd	The Northgate Church
Wayman-Hales/Hill Dickinson	Massey Motors	Oddbins
Browns of Chester	Devaprint	St. John Ambulance Brigade
Cheshire Constabulary	City Press of Chester Ltd	Theatr Clwyd
Cheshire County Council	Henkel	Chester Toy and Doll Museum
Chester City Council	Hinton Deevex	The Forum Precinct Management
Cheshire Drama Resources Centre	New World Mobility Centres	Chester Grosvenor Museum
Marsden Chemicals	The Countess of Chester	Chester Archives
Chester Gateway Theatre Trust	Hospital NHS Trust	

and to countless others too numerous to mention whose assistance and support has proved invaluable.

With special thanks to



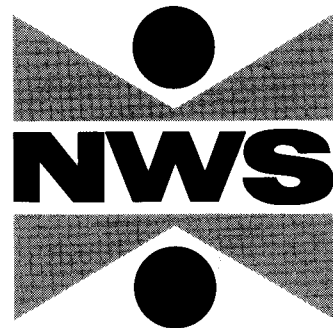
John and Tonia Roberts for their endless enthusiasm and professionalism in
providing us with the Big Top Theatre.



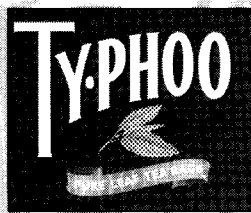
Blue Arrow for their generous loan of the barriers.

Typhoo Tea for their generous sponsorship of the refreshments tent.

*Finally, it is with grateful thanks that
The Board acknowledge their main funders,
without whose support the Chester Mystery Plays 1997
would not have been possible*



NWS BANK plc



**Foundation
for sport
and the arts**

ureenco

Ureco (Capenhurst) Limited

Cheshire County Council



Arts Services



***Chester
City Council***



A diversity of activities . . .

THE BODFARI STUD

WALTONS THE JEWELLERS

TREVALYN ESTATES

. . . a common purpose

To wish the Chester Mystery Plays
and their Guests
a very happy and successful evening

DAVID PICKERING EDWARD WALTON DAVID BIRKETT EVANS

Chester
MUSEUMS

**Take the mystery out of
Chester's 2000 years of History**

Visit The Grosvenor Museum

- Walk through a Roman Cemetery
- Reminisce in the Period House
- See Cheshire Wildlife from the dinosaurs onwards in the Natural History Gallery
- Enjoy the artistry of the Art & Silver Galleries
- Find that special souvenir in our Museum Shop

And Chester Heritage Centre

- Discover why Chester looks the way it does & find out more about the Rows, the Walls and those famous black & white buildings

For further information call Chester 402008

**DON'T MISS OUR SPECIAL MYSTERY PLAYS DISPLAYS
5TH - 27TH JULY 1997**

Hammond School

ACCREDITED ISJC

MANNINGS LANE, CHESTER CH2 2PB TEL: 01244 328542



...brings out the best
in your child

- Outstanding academic success
- Caring atmosphere with small classes
- Creative approach with a balanced curriculum
- Links with the wider community
- Encouraging confident decision makers
- New drama course for girls and boys
- Sixth form opening - September 1997

OPEN MORNING
Saturday 18th October

For further information please contact the School Secretary - Mrs Gale
Hammond School is also a Vocational Dance School



The Golden Grove
13th Century Coaching Inn and Restaurant
THE GOLDEN GROVE

*Traditional Country Inn
Full of Character*

Extensive Bar Meals and Carvery

Table D'Hôte Restaurant

Gardens and Barbeque

*Llyndir Lane, Burton Green
Rossett, Nr Wrexham*

Tel: 01244 570445

The Blue Bell

The Blue Bell offers friendly and efficient waiter service, freshly cooked food, wide choice of dishes and a bottomless coffee pot, as well as an extensive wine list.

*** All available at very competitive prices ***

For dinner try our constantly changing à la Carte or table d'Hôte menus in the historic surroundings of this 15th Century building, Chester's oldest surviving domestic structure.



The Blue Bell

*~ Restaurant ~
65 Northgate Street,
Chester*

*Tel: 01244 317758
to book a table*



Packwood Haugh School

A Leading Co-educational Preparatory School providing quality education for many Cheshire children

- Long tradition of academic and sporting success in preparing 7 to 13 year olds for major independent public schools. Many scholarships gained.
- Strong emphasis on pastoral care.
- Unrivalled sporting facilities including swimming pool and astroturf in extensive grounds.
- Purpose built music school.
- New computer room with multi-media facilities.
- Active participation in drama throughout the school.

Telephone 01939 260217 for details
Packwood Haugh, Ruyton-XI-Towns, Shrewsbury SY4 1HX

Cheshire County Council



Social Services

COULD YOU BE A FOSTER CARER?

We need foster carers who can provide temporary homes for children of all ages, for just a few days, or for several months.

If you are married, single, unemployed or employed we'd like to hear from you. We offer generous allowances, training and support.

Interested?

for more information ring us on
0151 357 4617

WHY NOT LET US DO THE ACTING?

WALKER, SMITH & WAY

SOLICITORS

26 Nicholas Street CHESTER CH1 2PQ

Telephone: (01244) 321111

102 Whitby Road ELLESMERE PORT L65 0AG

Telephone: (0151) 355 1845

23 Chester Street WREXHAM LL13 8BG

Telephone: (01978) 290111

Established in Cheshire for over 150 years and with 22 Partners and 150 staff, we believe we are your local Solicitors who can offer friendly advice and a quality service on a wide range of legal matters for individuals and businesses situated in the North-West, and North and mid-Wales with the same expertise and commitment as firms in the larger legal centres.

Contact:

Court Representation.....Andrew Shaw
 Matrimonial Advice.....Angela Woods
 Personal Injury Claims.....Jonathan Clark
 Agricultural Matters.....Peter Collins
 Company Law.....Julie Morgan
 Property.....Michael Jessop
 Wills & Trusts.....Roland Dawson
 Independent Financial Advice.....Jim Buckley

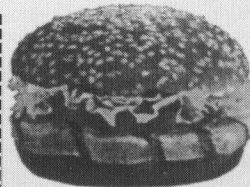
Regulated by the Law Society in the conduct of Investment business

Six flaming tasty offers

2
Everyday
Value
Meals for
£5

BK
Chicken
Flamer
and small
fries £2

Two BK
Chicken
Flamers
for £2.50



Buy a
Whopper
Junior, get
another for
FREE

Cheeseburger Meal for £1.50

Cheeseburger Meal includes a cheeseburger, regular size servings of Coca-Cola and Fries

Buy an Everyday Value Meal and get a Kids Club Meal for 99p

Everyday Value Meal includes a sandwich, regular size servings of Coca-Cola and fries. Kids Club Meal includes a hamburger, small fries, small soft drink and toy.

Terms and Conditions

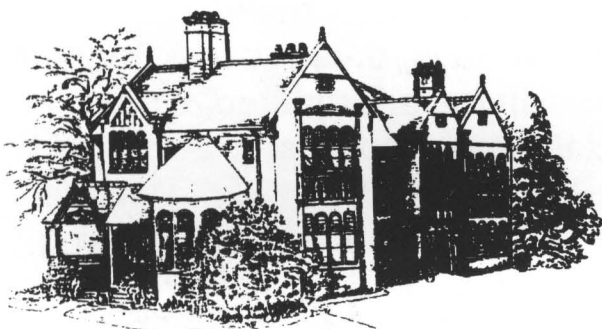
Please present this coupon before you place your order. Not to be used in conjunction with any other promotional coupon or offer. Not exchangeable for cash. This offer is valid until 31st July 1997 in the following Restaurants: Burger King, 73 Foregate Street, Chester and 20 Bridge Street, Chester

BURGER KING



Merton House (Downswood)

Principals: P.J & E. Watts



Downswood, West Bank,
off Abbott's Park,
Chester CH1 4BD

Telephone: (01244) 377165



CHINESE RESTAURANT

57 Frodsham Street, Chester CH1 3JJ
Telephone: 317873

Once aboard the Slow Boat you experience all of the sights and sounds of those mystical far-away places. The Slow Boat breaks down the frontiers of the East's finest cuisine.

Business Lunches and Conference facilities with raised stage and public address system.



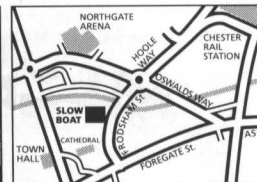
Intimate meal for two

Wedding Receptions

Parties for up to 150 people

**EAT AS MUCH AS YOU LIKE
Sunday Lunch Buffet**

Special events throughout the year, both Chinese and English.



The Slow Boat provides a secure, floodlit car park for its patrons



EVERY THURSDAY SINCE 1880

FREE KIDS MEAL

**WITH ANY
ADULT PURCHASE
OVER £3.00**

Present this voucher when you make any adult purchase over £3.00 and get a Kids Meal **FREE**.

This great offer is valid until:
August 31st 1997

Available at:
**2 STATION ROAD,
QUEENSFERRY.**

**64 WHITBY ROAD,
ELLESMERE PORT.**



Offer subject to availability. Not to be used in any other promotion.



STOCKPORT GRAMMAR SCHOOL

Headmaster, Mr. I. Mellor, MA

HMC Independent day school offering excellence in every aspect of co-education for boys and girls aged 4-18 years

JUNIOR SCHOOL

For boys and girls aged 4-11 years. For details of places available and to see the School, apply to the Headmaster, Mr. A. Carter tel. 0161 419 2405.

SENIOR SCHOOL

For details of Open Mornings and to apply for entry at 11+, contact the Headmaster's Secretary, Mrs. J. Baker. 40 Assisted Places available.

SIXTH FORM

If you are expecting good GCSE grades and want to join the top-performing co-educational Sixth Form in the North West, apply now to the Headmaster's Secretary 5 Assisted Places available.

Buxton Road, Stockport SK2 7AF
Telephone 0161 456 9000
e-mail sgs@argonet.co.uk
Internet
www.argonet.co.uk/users/sgs

Outstanding academic results
Happy, disciplined and busy environment
Superb facilities and

The school is a registered charity.



Bookland

12 Bridge Street, Chester
Tel: (01244) 347323 Fax: (01244) 341868

We stock a wide range including:

- * Local Books * Children's Books *
- * Stationery Office *
- * Ordnance Survey *
- * Sheet Music * Strings * Reeds *
- * Musical Gifts & Accessories *

and also offer:

Discount on Selected Best Sellers



Bookland

*Books ~ Maps
Music
For All the Family*

Your strategic marketing and PR can be improved by sponsoring the arts.

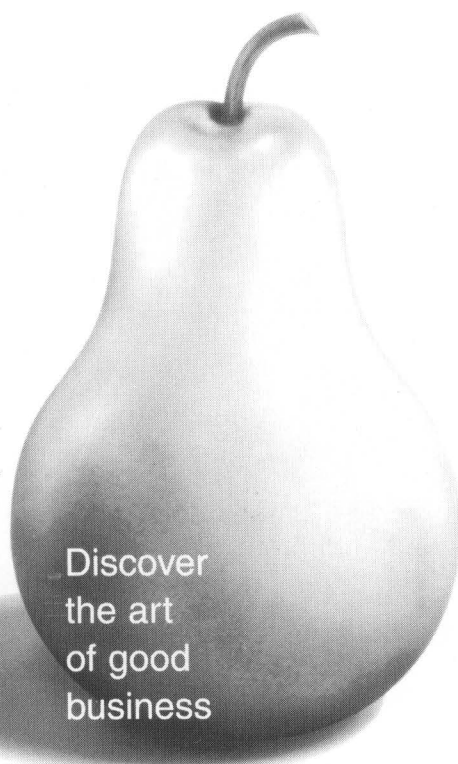
It is one of the most powerful ways to reinforce your corporate image, allowing you to promote your company's name, logo, products and services to a wider, targeted audience. Highly visible and cost-effective, arts sponsorship also gives you the opportunity to develop and strengthen your involvement with the cultural life of your community.

If you receive a Pairing Scheme award, this can also bring valuable Government endorsements, access to influential contacts and help you receive more prominent press coverage.

ABSA manages the Pairing Scheme on behalf of the Department of National Heritage. If you want to sponsor an arts organisation event, we could match your sponsorship pound for pound. That means your money goes twice as far and your business gains double the benefits.

If you want to receive important government endorsement and pair up with the arts, contact your nearest ABSA office now.

**Pair up with
the arts and
raise your
public profile**



Discover
the art
of good
business

absa

Patron:
HRH The Prince of Wales

Chairman:
Sir Simon Hornby

Director General:
Colin Tweedy

ABSA Head Office

Nutmeg House,
60 Gainsford Street,
Butlers Wharf,
London SE1 2NY
Telephone: 0171 378 8143.
Fax: 0171 407 7527

ABSA Midlands

Suite 16-18, 21 Bennetts Hill,
Birmingham B2 5QP
Telephone: 0121 248 1200.
Fax: 0121 248 1202

ABSA North

Dean Clough, Halifax,
West Yorkshire HX3 5AX
Telephone: 01422 367 860.
Fax: 01422 363 254

ABSA Scotland

100 Wellington Street,
Glasgow G2 6PB
Telephone: 0141 204 3864.
Fax: 0141 204 3897

ABSA Wales

9 Stryd yr Amgueddfa,
Caerdydd CF1 3NX
9 Museum Place,
Cardiff CF1 3NX
Ffôn/Telephone: 01222 221 382.
Fax: 01222 221 447

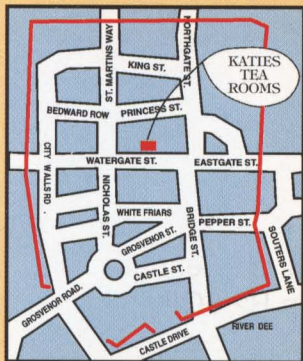


ABSA (the Association for Business Sponsorship of the Arts) exists to promote and encourage partnerships between the private sector and the arts, to their mutual benefit, and to the mutual benefit of the community at large. A registered charity, ABSA is an independent organisation with over 300 business members.

Tastefully created within two of Chester's most important and oldest buildings.
 Sample our superb menu whilst sitting in beautiful and historic surrounds.
 All this together with Silver Service reminiscent of a bygone era.

Great Britain's Largest and most Prestigious Tea Rooms

OPEN 7 DAYS A WEEK
 together with Katie's Gift Shops



Katie's
 Tea Rooms

also from 6.00pm
 Piano & Cafe Bar
 Happy Hour
 6 - 7pm

38-42 WATERGATE STREET, CHESTER CH1 2LA. TEL: 01244 400322



Chester Diocesan Adoption Services

making a difference...

Chester Diocesan Adoption Services (CDAS) provides a comprehensive service to all those whose lives are touched by adoption. That includes birth parents, people who adopt and those who are adopted.

CDAS is an approved adoption agency which helps people from all walks of life to adopt children from many different backgrounds.

Our main role is to find new families - including single, divorced and widowed individuals - who can adopt young people who, for one reason or another, can no longer live with their own family.

CDAS is an independent charity operating within a 50-mile radius of its base in Chester.

We're proud of our national reputation for professionalism, expertise and quality of service which has resulted in the placement of more than 2,000 young people with adoptive families since 1955.

The cost of our success is high: limited funding means that we can't help as many children as

we would want. We need your help to maintain our efforts and increase our success.

Ask for a copy of our supporter's pack and the CDAS video, 'For a Brighter Future'.

Contact 14 Liverpool Road
 Chester, Cheshire, CH2 1AE
 Tel: 01244 390938

We're particularly keen to hear from families and individuals who would consider caring for older children of primary school age and above. Could you help?

Registered Charity No. 512892.



DISCOVER THE BEST KEPT SECRET IN SHOW BUSINESS

Every two weeks, a thousand theatre insiders pick up their copy of *Theatre Record*, the chronicle of the British stage. There they find a complete collection of hundreds of theatre reviews for the past fortnight, from all the major national critics (including Michael Billington, Benedict Nightingale, Charles Spencer, Jack Tinker and Irving Wardle) exactly as they appeared in the newspapers, plus Fringe reviews from *Time Out* and *What's On*. A cast list is given for every show, and usually a production photograph. Coming productions in and out of London are listed for many months ahead - this is the listing many critics use themselves to plan their own visits.

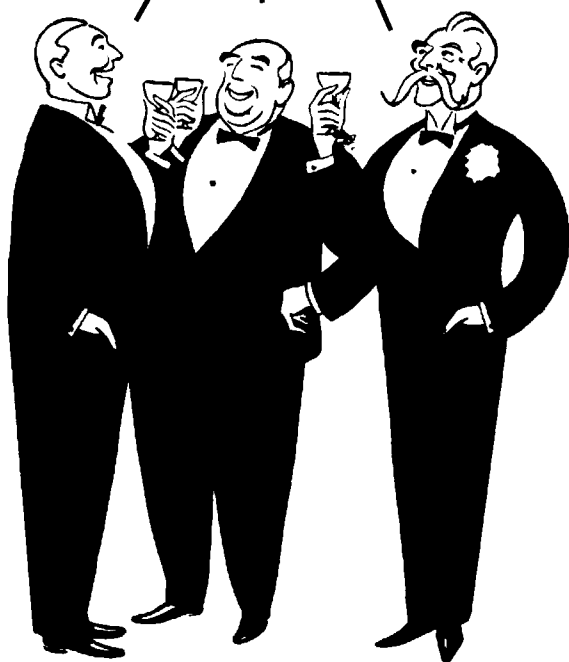
If you want to join this privileged group, it will cost you less than the price of a daily newspaper to have this feast of theatre news and views sent to your home twenty-six times a year - and there's an annual index to everyone mentioned. For a free specimen copy and details of how to subscribe, write now to

Theatre Record

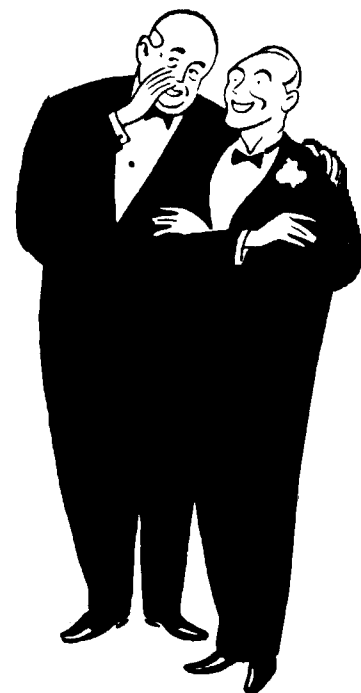
305 WHITTON DENE, ISLEWORTH, MIDDLESEX TW7 7NE

Tel: 0181 892 6087 Fax: 0181 893 9677

*"Here's to even greater
profits next year"*



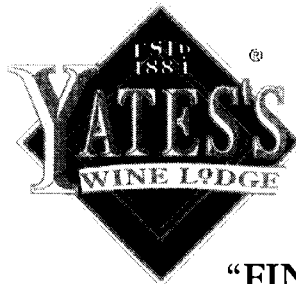
*"Rumour has it they
are advertising in
John Good Programmes"*



John Good
HOLBROOK

ADVERTISING SALES OFFICE

4 Elm Place, Eynsham, Oxford OX8 1PU Tel: (01865) 883967 Fax: (01865) 883809

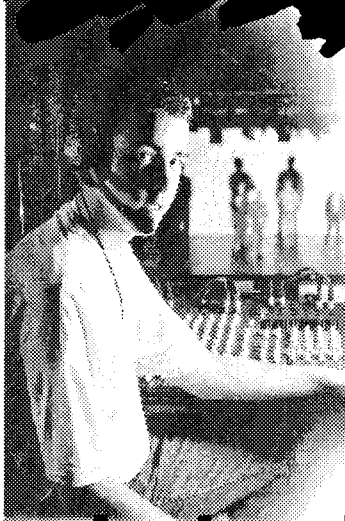


Gary Cheetham - *Manager*
YATES'S WINE LODGE
 15-23 Frodsham Street
 Chester CH1 3JI
 Tel: 01244 344813

DELICIOUS BAR MEALS
 Monday - Friday 11.00am - 7.00pm
 Saturday 11.00am - 5.00pm
 Sunday 12noon - 4.00pm

"FINE WINES, SPIRITS, SHERRY AND PORTS"
"LIVE ENTERTAINMENT SEVEN NIGHTS A WEEK"
"We Offer More in the Unrivalled Meeting Place"

Stage Success



A world of opportunities . . . in performing arts

Whatever your ambition, we can help you make your mark with education and training leading to qualifications like the BTEC National Diploma in Performing Arts, in Dance, Drama, Music Theatre or Technical Stage Management. 'A' levels and GCSE's are also available in Dance and Drama. You may prefer our Introduction to Performing Arts course, or the new Access to HE in Performing Arts, created especially for mature students. Or there are specialist courses like NVQ Lighting (level 2), ASET Sound and ASET Stagecraft, both offered at levels 2 and 3.

starts with
 call **01244 670600**
 or **0151 356 7800**
FOR INFORMATION



west cheshire college



West Cheshire College exists to provide education and training for the community. The college is a registered charity. We are committed to equality of opportunity.



INVESTOR IN PEOPLE

HANDBRIDGE CENTRE • GRANGE CENTRE • ARTS CENTRE • GREENBANK CENTRE

Pizzaland

Pizzaland 1P
STARTER FOR

Buy any starter and, at the same time, get another starter of the same value or less for 1p. Offer valid until 13th July 1997. Not redeemable for cash or with any other offer. Please surrender vouchers when you ask for your bill.

Pizzaland 1P
STARTER FOR

Buy any starter and, at the same time, get another starter of the same value or less for 1p. Offer valid until 13th July 1997. Not redeemable for cash or with any other offer. Please surrender vouchers when you ask for your bill.

Pizzaland 1P
PIZZA FOR

Buy any small pizza and, at the same time, get another one of the same value or less for 1p. Offer valid until 13th July 1997. Not redeemable for cash or with any other offer. Please surrender vouchers when you ask for your bill.

Pizzaland 1P
PIZZA FOR

Buy any small pizza and, at the same time, get another one of the same value or less for 1p. Offer valid until 13th July 1997. Not redeemable for cash or with any other offer. Please surrender vouchers when you ask for your bill.

Pizzaland 1P
DESSERT FOR

Buy any Dessert and, at the same time, get another Dessert of the same value or less for 1p. Offer valid until 13th July 1997. Not redeemable for cash or with any other offer. Please surrender vouchers when you ask for your bill.

Pizzaland 1P
DESSERT FOR

Buy any Dessert and, at the same time, get another Dessert of the same value or less for 1p. Offer valid until 13th July 1997. Not redeemable for cash or with any other offer. Please surrender vouchers when you ask for your bill.

Here today . . . gone tomorrow?

Many of Britain's theatres fall under threat of destruction or decay.



THE THEATRES TRUST

was set up by Act of Parliament "for the better protection of theatres for the benefit of the nation".

It needs your support to continue and expand its work.

Please send a donation, or write for further details to:

The Theatres Trust, 22 Charing Cross Road, London WC2H 0HR

GRADUATE BEFORE THE NEXT MYSTERY CYCLE!

In November every year, here at the Cathedral, University College Chester holds its Graduation ceremony.

Students receiving their degrees come from a whole variety of backgrounds and age groups.

If you would like to graduate here before the next Mystery Cycle, why not contact us for the 1998 *undergraduate* (or if you already have a degree) the *postgraduate* prospectus.

... You may be so inspired by tonight's performance that you'd like to study a relevant subject like Drama and Theatre Studies or Theology or History or English.

These are just four of the 20 subject areas available at the College, many of which are available by part time study.

Many of the performers tonight are staff and students of ours.

Find out how you can join them by contacting the University College Chester Registry on 01244 375444.

EXTENDING OPPORTUNITIES THROUGH EDUCATION



UNIVERSITY
COLLEGE
CHESTER

A College of the
University of Liverpool

Culture?

Archaeology

Protecting, investigating and helping people to understand and enjoy Chester's historic remains.

Archives

Discover 800 years of Chester's history through books, manuscripts and photographs.

Heritage

Chester's wealth of historic buildings and resources interpreted for everyone to enjoy.

Education

Curriculum based teaching and resources.

Museums

From Romans to Victorians, dinosaurs, silver and computers. Come and experience Chester's past and present at the Grosvenor Museum and The Heritage Centre.

Arts

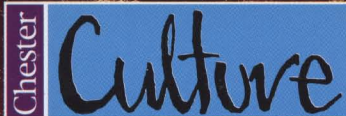
Fun for kids, parades, festivals and special events. Information, grant aid for arts organisations and funding advice. Workshops, lectures and community projects.

in Chester you live it.

for further information contact: Stephanie Cornes



Chester City Council



Chester Cultural Services, Chester City Council,
The Forum, Chester CH1 2HS. Telephone (01244) 402466
Fax (01244) 321302. <http://www.chestercc.gov.uk>

Anglie Stone fertur et habetur Rex fu
affertorem quam erit Civitatem urium est
comas Curum em idem Civitat nec non p
quod dicit Civitas ac tota te am m p
municipat de Gloverstone omnino except sunt a Comi



*From
Heaven & Hell
to Miracles*

*It's that kind of experience
that makes us experts
in our business.*

HILL DICKINSON
solicitors



INCORPORATING WAYMAN - HALES

12 WHITE FRIARS CHESTER CH1 1PT TELEPHONE: 01244-321 122 FAX: 01244-343 642

Also at LIVERPOOL, LONDON & MANCHESTER

T H E L A W I S O U R B U S I N E S S